

L'EMIGRAZIONE NEGLI STATI UNITI D'AMERICA

Una prima ricognizione

Angelo Di Gennaro

Premessa

I migranti economici, i richiedenti asilo e i clandestini di oggi stanno lì a ricordarcelo. Anche noi, a suo tempo - per non dire da tempo immemore, con la pastorizia, e più recentemente con l'emigrazione alla miniera di Monteneve (BZ) e poi a Milano, Torino, Roma o in altre città d'Italia, d'Europa e del mondo, solo per fare qualche esempio - abbiamo intrapreso viaggi avventurosi alla ricerca di una vita migliore.

Per quanto riguarda l'emigrazione da Scanno negli Stati Uniti d'America iniziamo la nostra ricognizione (è un viaggio anche questo?) con il presentare l'elenco contenuto nel sito *Ellis Island Immigration Museum*; un elenco, quindi, che è facilmente consultabile da chiunque.



Ecco i nominativi degli emigranti di Scanno e Frattura contenuti nell'elenco:

Da ...colo Michengelo a Berardi Croce Maria

Name	traveled with	Residence	Arrived	Age	View	View	View	View
...colo, Michelangelo		Scanno	1902	26	Passenger Record	Text Manifest	Scanned Manifest	Ship Image
...lemente, Eustachio DiClemente, Eustachio		Scanno	1907	14	Passenger Record	Text Manifest	Scanned Manifest	Ship Image
Acciarito, Basilio *		Scanno, Italy	1913	34	Passenger Record	Text Manifest	Scanned Manifest	Ship Image
Acciarito, Basilio		Scanno, Italy	1920	41	Passenger Record	Text Manifest	Scanned Manifest	Ship Image
Acciarito, Nunzio		Scanno, Italy	1893	43	Passenger Record	Text Manifest	Scanned Manifest	Ship Image
Accivile, Giuseppe		Scanno	1905	29	Passenger Record	Text Manifest	Scanned Manifest	Ship Image
Accivile, Ilario		Scanno	1896	43	Passenger Record	Text Manifest	Scanned Manifest	Ship Image
Accivile, Pasquale		Scanno, Italy	1910	36	Passenger Record	Text Manifest	Scanned Manifest	Ship Image
Accivile, Pasquale *		Scanno	1905	31	Passenger Record	Text Manifest	Scanned Manifest	Ship Image
Accivite, Pasquale		Scanno	1905	31	Passenger Record	Text Manifest	Scanned Manifest	Ship Image
Acourte, Angelo		Scanno, Aguila	1909	19	Passenger Record	Text Manifest	Scanned Manifest	Ship Image
Andrino, Dco.		Scannogno	1902	17	Passenger Record	Text Manifest	Scanned Manifest	Ship Image
Aniceto, Francalanzio*		Scanno, Italy	1904	14	Passenger Record	Text Manifest	Scanned Manifest	Ship Image
Francalancia, Aniceto		Scanno, Italy	1904	14	Passenger Record	Text Manifest	Scanned Manifest	Ship Image
Appollonio, Michele		Scanno, Italy	1912	40	Passenger Record	Text Manifest	Scanned Manifest	Ship Image
Arcivitti, Flavio *		Scanno	1894	41	Passenger Record	Text Manifest	Scanned Manifest	Ship Image
Ariolo, Addolorata		Scanno, Aquila	1907	25	Passenger Record	Text Manifest	Scanned Manifest	Ship Image
Augellone, Egidio *		Scanno	1902	18	Passenger Record	Text Manifest	Scanned Manifest	Ship Image
Augellone, Egidio		Scanno	1902	18	Passenger Record	Text Manifest	Scanned Manifest	Ship Image
Augellone, Elmo C. *		Scanno, Agnila	1916	5	Passenger Record	Text Manifest	Scanned Manifest	Ship Image
Augellone, Elmo C.		Scanno, Agnila	1916	5	Passenger Record	Text Manifest	Scanned Manifest	Ship Image
Augellone, Giusto *		Scanno, Italy	1910	27	Passenger Record	Text Manifest	Scanned Manifest	Ship Image
Augellone, Giusto		Scanno, Italy	1910	27	Passenger Record	Text Manifest	Scanned Manifest	Ship Image
Augellone, Pietro *		Scanno	1903	21	Passenger Record	Text Manifest	Scanned Manifest	Ship Image
Augellone, Pietro		Scanno	1903	21	Passenger Record	Text Manifest	Scanned Manifest	Ship Image
B...one, Alfonso		Scannos	1901	46	Passenger Record	Text Manifest	Scanned Manifest	Ship Image
Balsano, Ma.Carmelo		Scanno	1899	42	Passenger Record	Text Manifest	Scanned Manifest	Ship Image
Berardi, Annibale		Scanno *	1913	16	Passenger Record	Text Manifest	Scanned Manifest	Ship Image
Berardi, Annunziata		Sca...	1913	16	Passenger Record	Text Manifest	Scanned Manifest	Ship Image
Berardi, Annunziata		Scanno *	1913	20	Passenger Record	Text Manifest	Scanned Manifest	Ship Image
Berardi, Annunziata		Scamio	1913	20	Passenger Record	Text Manifest	Scanned Manifest	Ship Image
Berardi, Croce *		Scanno, Italy	1913	18	Passenger Record	Text Manifest	Scanned Manifest	Ship Image
Croce, Berardi		Scanno, Italy	1913	18	Passenger Record	Text Manifest	Scanned Manifest	Ship Image
Berardi, Croce		Scanno *	1913	28	Passenger Record	Text Manifest	Scanned Manifest	Ship Image
Berardi, Croce		Scamo	1913	28	Passenger Record	Text Manifest	Scanned Manifest	Ship Image
Berardi, Croce Maria		Scanno, Italy	1923	38	Passenger Record	Text Manifest	Scanned Manifest	Ship Image

Da Berardi Giuseppe a Buccini Alessandro

Berardi, Giuseppe	Scanno, Italy	1911	50	Passenger Record	Text Manifest	Scanned Manifest	Ship Image
Berardi, Ma Filomena	Scanno, Aquila	1907	32	Passenger Record	Text Manifest	Scanned Manifest	Ship Image
Berardi, Paolo	Scanno	1901	18	Passenger Record	Text Manifest	Scanned Manifest	Ship Image
Berardi, Pasqualina On manifest 2ce							
Wife of Simboli, Tommaso *	Scanno *	1913	21 / 24?	Passenger Record	Text Manifest	Scanned Manifest	Ship Image
Sister Gisede Berardi * Chicago							
Berardi, Pasqualina Wife of Simboli, Tommaso * Chicago	Scanno * Serama	1913	24	Passenger Record	Text Manifest	Scanned Manifest	Ship Image
Bessolo, Cotta	Scannogno	1902	18	Passenger Record	Text Manifest	Scanned Manifest	Ship Image
Bessolo, Giovanni	Scannogno	1902	30	Passenger Record	Text Manifest	Scanned Manifest	Ship Image
Bessolo, Giovanni	Scannogno	1902	27	Passenger Record	Text Manifest	Scanned Manifest	Ship Image
Bessolo, Giuseppe	Scannogno	1902	22	Passenger Record	Text Manifest	Scanned Manifest	Ship Image
Bolea, Angelantonio	Scanno, Italy	1913	24	Passenger Record	Text Manifest	Scanned Manifest	Ship Image
Bolea, Angelo	Scanno, Italy	1923	34	Passenger Record	Text Manifest	Scanned Manifest	Ship Image
Bolea, Cristofaro	Scanno, Italy	1913	27	Passenger Record	Text Manifest	Scanned Manifest	Ship Image
Bolea, Cristofaro	Scanno, Aquila	1910	23	Passenger Record	Text Manifest	Scanned Manifest	Ship Image
Bolea, Cristofaro	Scanno, Italy	1922	36	Passenger Record	Text Manifest	Scanned Manifest	Ship Image
Bolea, Domenico *	SCANNO	1922	26	Passenger Record	Text Manifest	Scanned Manifest	Ship Image
Bols, Domenico	ITALY						
Bolea, Ma. Consolata *	Scanno, Aquila	1910	26	Passenger Record	Text Manifest	Scanned Manifest	Ship Image
Balea, Mia Consolato							
Bonsignore, Vincenzo	Scanno	1899	71	Passenger Record	Text Manifest	Scanned Manifest	Ship Image
Bosco, Alessandro	Scanno, ...	1910	18	Passenger Record	Text Manifest	Scanned Manifest	Ship Image
Bougine, Elvira	Scanno, Aquila	1908	0	Passenger Record	Text Manifest	Scanned Manifest	Ship Image
Bruni, Luigi	Scanno	1902	44	Passenger Record	Text Manifest	Scanned Manifest	Ship Image
Bruno, Giuseppa Aleria	Scanno	1912	29	Passenger Record	Text Manifest	Scanned Manifest	Ship Image
Bruno, Luigi	Scanno	1902	44	Passenger Record	Text Manifest	Scanned Manifest	Ship Image
Bruno, Giuseppe	Scanno	1902	26	Passenger Record	Text Manifest	Scanned Manifest	Ship Image
Bruno, Vincenzo Mario	Scanno, Italy	1913	17	Passenger Record	Text Manifest	Scanned Manifest	Ship Image
Buccini, Anna *	Scanno	1913	9	Passenger Record	Text Manifest	Scanned Manifest	Ship Image
Buccini Giannamore, Angela *	Scanno, Italy	1913	35	Passenger Record	Text Manifest	Scanned Manifest	Ship Image
Buccini, Antonio	Scanno, Italy	1913	16	Passenger Record	Text Manifest	Scanned Manifest	Ship Image
Buccini, Egidio	Scanno, Italy	1913	7	Passenger Record	Text Manifest	Scanned Manifest	Ship Image
Buccini, Eustacchio	Scanno, Italy	1913	48	Passenger Record	Text Manifest	Scanned Manifest	Ship Image
Buccini, Eustacchio	Scanno	1897	32	Passenger Record	Text Manifest	Scanned Manifest	Ship Image
Buccini, Giovanni *	Scanno, Italy	1913	1	Passenger Record	Text Manifest	Scanned Manifest	Ship Image
Buccini, Ida *	Scanno, Italy	1913	12	Passenger Record	Text Manifest	Scanned Manifest	Ship Image
Buccini, Paolo	Scanno, Italy	1922	32	Passenger Record	Text Manifest	Scanned Manifest	Ship Image
Buccini, Simone	Scanno, Aquila	1908	23	Passenger Record	Text Manifest	Scanned Manifest	Ship Image
Buccini, Alessandro	Scanno, Aquila	1912	36	Passenger Record	Text Manifest	Scanned Manifest	Ship Image

Da Cajento Polnurino (?) a Carbow Giuseppe

Cajento, Polnurino	Scanno	1905	25	Passenger Record	Text Manifest	Scanned Manifest	Ship Image
Cajento, Salvatore	Scanno	1905	27	Passenger Record	Text Manifest	Scanned Manifest	Ship Image
Galante, Mariano *	Scanno	1905	35	Passenger Record	Text Manifest	Scanned Manifest	Ship Image
Calante, Mariano	Scanno, Aquila	1912	19	Passenger Record	Text Manifest	Scanned Manifest	Ship Image
Calonio, Alberico *	Scanno	1899	30	Passenger Record	Text Manifest	Scanned Manifest	Ship Image
Calonico, Alberio	Scanno, Aquila	1909	39	Passenger Record	Text Manifest	Scanned Manifest	Ship Image
Calonico, Angelo	Scanno	1906	13	Passenger Record	Text Manifest	Scanned Manifest	Ship Image
Calonico, Antinio	Scanno,	1904	45	Passenger Record	Text Manifest	Scanned Manifest	Ship Image
Calonico, Antonio *	Scanno, Aquila	1908	22	Passenger Record	Text Manifest	Scanned Manifest	Ship Image
Calonico, Bruveio	Scanno,	1904	14	Passenger Record	Text Manifest	Scanned Manifest	Ship Image
Calonico, Domenico	Scanno	1901	36	Passenger Record	Text Manifest	Scanned Manifest	Ship Image
Campana, Luigi	Scanno, Italy	1924	42	Passenger Record	Text Manifest	Scanned Manifest	Ship Image
Caputo, Angelo	Scanno, Italy	1924	40	Passenger Record	Text Manifest	Scanned Manifest	Ship Image
Caputo, Antonio	Scanno	1900	35	Passenger Record	Text Manifest	Scanned Manifest	Ship Image
Caputo, Domenico	Scanno	1900	35	Passenger Record	Text Manifest	Scanned Manifest	Ship Image
Caputo, Donato	Scanno	1905	19	Passenger Record	Text Manifest	Scanned Manifest	Ship Image
Caputo, Donato	Scanno, Italy	1920	31	Passenger Record	Text Manifest	Scanned Manifest	Ship Image
Caputo, Ma Incononata	Scanno	1906	29	Passenger Record	Text Manifest	Scanned Manifest	Ship Image
Caputo, Nicola	Scanno	1903	20	Passenger Record	Text Manifest	Scanned Manifest	Ship Image
Caputo, Nicola	Scanno	1900	18	Passenger Record	Text Manifest	Scanned Manifest	Ship Image
Caputo, Pasquale	Scanno, (Aquila)	1903	40	Passenger Record	Text Manifest	Scanned Manifest	Ship Image
Caputo, Pasquale	Scanno, Italy	1920	33	Passenger Record	Text Manifest	Scanned Manifest	Ship Image
Caputo, Pellogrino	Scanno, (Aquila)	1903	23	Passenger Record	Text Manifest	Scanned Manifest	Ship Image
Caputo, Rocco	Scanno, (Aquila)	1903	23	Passenger Record	Text Manifest	Scanned Manifest	Ship Image
Caputo, Vito	Scanno, (Aquila)	1903	18	Passenger Record	Text Manifest	Scanned Manifest	Ship Image
Caranfa, Giovanni *	Scanno, Italy	1913	17	Passenger Record	Text Manifest	Scanned Manifest	Ship Image
Caranfa, Giuseppe *	Scanno	1902	33	Passenger Record	Text Manifest	Scanned Manifest	Ship Image
Cavanfa	Scanno, Aquila	1907	38	Passenger Record	Text Manifest	Scanned Manifest	Ship Image
Caranfa, Giuseppe	Scanno Italy	1921	41	Passenger Record	Text Manifest	Scanned Manifest	Ship Image
Caranfa, Pasquale	Scanno, Aquila	1909	30	Passenger Record	Text Manifest	Scanned Manifest	Ship Image
Caranfa, Pietro	Scanno, Italy	1920	41	Passenger Record	Text Manifest	Scanned Manifest	Ship Image
Caranfa, Pietro	Scanno	1906	34	Passenger Record	Text Manifest	Scanned Manifest	Ship Image
Carbone, Paolo	Scanno, Italy	1914	38	Passenger Record	Text Manifest	Scanned Manifest	Ship Image
Carbow, Giuseppe	Scanno, Italy	1914	38	Passenger Record	Text Manifest	Scanned Manifest	Ship Image

Da Romito Giuseppe a Tarullo Elisa

Caretti, Giuseppe	Scanno, Italy	1922	33	Passenger Record	Text Manifest	Scanned Manifest	Ship Image
Romito, Giuseppe *	Scanno, Aquila	1910	34	Passenger Record	Text Manifest	Scanned Manifest	Ship Image
Carfagnini, Clemente	Scanno	1901	35	Passenger Record	Text Manifest	Scanned Manifest	Ship Image
Carfagnini, Donato	Scanno	1898	32	Passenger Record	Text Manifest	Scanned Manifest	Ship Image
Carfagnini, Donato	Scanno, Italy	1913	28	Passenger Record	Text Manifest	Scanned Manifest	Ship Image
Carfagnini, Francesco *	Scanno, Aquila	1910	37	Passenger Record	Text Manifest	Scanned Manifest	Ship Image
Carsaguini	Scanno, Italy	1924	50	Passenger Record	Text Manifest	Scanned Manifest	Ship Image
Carfagnini, Giuseppe	Scanno, Italy	1912	43	Passenger Record	Text Manifest	Scanned Manifest	Ship Image
Carfagnini, Giuseppe	Scanno	1903	16	Passenger Record	Text Manifest	Scanned Manifest	Ship Image
Carfagnini, Michele	Scanno	1901	40	Passenger Record	Text Manifest	Scanned Manifest	Ship Image
Carfagnini, Salvatore	Scanno, Italy	1913	25	Passenger Record	Text Manifest	Scanned Manifest	Ship Image
Caranfa ?	Scanno, Italy	1924	1	Passenger Record	Text Manifest	Scanned Manifest	Ship Image
Caronta, Costanzo	Scanno, Aquila	1908	34	Passenger Record	Text Manifest	Scanned Manifest	Ship Image
Carsillo, Donato	Scanno, Italy	1924	1	Passenger Record	Text Manifest	Scanned Manifest	Ship Image
Tarullo *	Scanno, Italy	1924	1	Passenger Record	Text Manifest	Scanned Manifest	Ship Image
Carullo, Armando	Scanno, Italy	1924	1	Passenger Record	Text Manifest	Scanned Manifest	Ship Image
Tarullo *	Scanno, Italy	1924	1	Passenger Record	Text Manifest	Scanned Manifest	Ship Image
Carullo, Elisa	Scanno, Aquila	1908	34	Passenger Record	Text Manifest	Scanned Manifest	Ship Image

Da Tarullo Francesco a Cellitti Antonio

Tarullo *	Scanno, Italy	1914	25	Passenger Record	Text Manifest	Scanned Manifest	Ship Image
Carullo, Francesco	Scanno	1905	25	Passenger Record	Text Manifest	Scanned Manifest	Ship Image
Tarullo *	Scanno	1905	25	Passenger Record	Text Manifest	Scanned Manifest	Ship Image
Carullo, Francesco	Scanno	1905	40	Passenger Record	Text Manifest	Scanned Manifest	Ship Image
Anaglione, Costanzo	Scanno	1905	40	Passenger Record	Text Manifest	Scanned Manifest	Ship Image
Castanzo, Anaglione	Scanno, Italy	1914	32	Passenger Record	Text Manifest	Scanned Manifest	Ship Image
Cellini, Francesco	Scanno	1905	25	Passenger Record	Text Manifest	Scanned Manifest	Ship Image
Cellini, Francesco	Scanno	1905	21	Passenger Record	Text Manifest	Scanned Manifest	Ship Image
Cellini, Giobbe	Scanno, Aquila	1908	24	Passenger Record	Text Manifest	Scanned Manifest	Ship Image
Cellini, Giobbe	Scanno	1901	29	Passenger Record	Text Manifest	Scanned Manifest	Ship Image
Cellini, Giuseppe	Scanno	1901	7	Passenger Record	Text Manifest	Scanned Manifest	Ship Image
Cellini, Ilario *	Scanno	1901	21	Passenger Record	Text Manifest	Scanned Manifest	Ship Image
Cellini, Ma. Addolorata *	Scanno	1899	28	Passenger Record	Text Manifest	Scanned Manifest	Ship Image
Cellitti, Cesidio	Scanno, Italy	1915	44	Passenger Record	Text Manifest	Scanned Manifest	Ship Image
Cellitti, Cesirio Nicola	Scanno	1905	38	Passenger Record	Text Manifest	Scanned Manifest	Ship Image
Cellitti, Domenico	Scanno, Italy	1920	27	Passenger Record	Text Manifest	Scanned Manifest	Ship Image
Cellitti, Eustachio	Scanno, Italy	1920	22	Passenger Record	Text Manifest	Scanned Manifest	Ship Image
Cellitti, Guido	Scanno, Italy	1923	26	Passenger Record	Text Manifest	Scanned Manifest	Ship Image
Cellitti	Scanno	1907	15	Passenger Record	Text Manifest	Scanned Manifest	Ship Image
Callitti, Nazzeno							
Cellitti							
Calitti, P. Antonio							

Da Centofanti Angelo a Cetrone Vittorino

Centofanti, Angelo	Scanno, Aquila	1912	18	Passenger Record	Text Manifest	Scanned Manifest	Ship Image
Centofanti, Cesidio	Scanno	1897	25	Passenger Record	Text Manifest	Scanned Manifest	Ship Image
Ceresalvo, Giuseppe	Scanno	1898	31	Passenger Record	Text Manifest	Scanned Manifest	Ship Image
Cetrone, Fiorina	Scanno, Aquila	1913	4	Passenger Record	Text Manifest	Scanned Manifest	Ship Image
Cetrone, Giuseppe	Scanno	1905	35	Passenger Record	Text Manifest	Scanned Manifest	Ship Image
Cetrone, Maria Egidia	Scanno, Italy	1921	29	Passenger Record	Text Manifest	Scanned Manifest	Ship Image
Cetrone, Nunziato	Scanno	1902	33	Passenger Record	Text Manifest	Scanned Manifest	Ship Image
Cetrone, Paola	Scanno, Italy	1912	22	Passenger Record	Text Manifest	Scanned Manifest	Ship Image
Cetrone, Paolo Ant.	Scanno	1899	19	Passenger Record	Text Manifest	Scanned Manifest	Ship Image
Cetrone, Pasquale	Scanno, Aquila, Italy	1910	29	Passenger Record	Text Manifest	Scanned Manifest	Ship Image
Cetrone, Pasquale	Scanno	1903	22	Passenger Record	Text Manifest	Scanned Manifest	Ship Image
* Cetrone, Quirino	Scanno, Italy	1910	29	Passenger Record	Text Manifest	Scanned Manifest	Ship Image
Cetrone, Salvo	Scanno, Aquila, Italy	1910	38	Passenger Record	Text Manifest	Scanned Manifest	Ship Image
Cetrone, Sante	Scanno, Italy	1923	37	Passenger Record	Text Manifest	Scanned Manifest	Ship Image
Cetrone, Santo	Scanno, Agusta	1910	24	Passenger Record	Text Manifest	Scanned Manifest	Ship Image
Cetrone, Vittorino	Scanno, Italy	1912	2	Passenger Record	Text Manifest	Scanned Manifest	Ship Image

Da Ciancarelli Adolfo a Ciccotti Eustachio

Ciancarelli, Adolfo	Scanno	1910	20	Passenger Record Text Manifest	Scanned Manifest	Ship Image
Ciancarelli, Angelo	Scanno, Italy	1923	26	Passenger Record Text Manifest	Scanned Manifest	Ship Image
Ciancarelli, Basilio	Scanno, Aquila	1913	29	Passenger Record Text Manifest	Scanned Manifest	Ship Image
Ciancarelli, Domenica	Scanno, Italy	1921	25	Passenger Record Text Manifest	Scanned Manifest	Ship Image
Ciancarelli, Domenico	Scanno, Aquila	1910	18	Passenger Record Text Manifest	Scanned Manifest	Ship Image
Ciancarelli, Eustachio	Scanno	1901	42	Passenger Record Text Manifest	Scanned Manifest	Ship Image
Ciancarelli, Giovanni	Scanno	1905	18	Passenger Record Text Manifest	Scanned Manifest	Ship Image
Ciancarelli, Leonardo	Scanno, Aquila	1908	22	Passenger Record Text Manifest	Scanned Manifest	Ship Image
Ciancarelli, Luigi	Scanno, Italy	1921	32	Passenger Record Text Manifest	Scanned Manifest	Ship Image
Ciancarelli, Luigi	Scanno	1903	21	Passenger Record Text Manifest	Scanned Manifest	Ship Image
Ciancarelli, Mario	Scanno, Italy	1924	39	Passenger Record Text Manifest	Scanned Manifest	Ship Image
Ciancarelli, Primaldo	Scanno, Italy	1913	2	Passenger Record Text Manifest	Scanned Manifest	Ship Image
Ciarallo, Costantino *	Scanno, Italy	1923	17	Passenger Record Text Manifest	Scanned Manifest	Ship Image
Ciarallo, Costanzo	Scanno	1900	26	Passenger Record Text Manifest	Scanned Manifest	Ship Image
Ciarallo, Francesco	Scanno	1900	20	Passenger Record Text Manifest	Scanned Manifest	Ship Image
Ciarallo, Luca	Scanno, Italy	1907	42	Passenger Record Text Manifest	Scanned Manifest	Ship Image
Ciarallo, Luca	Scanno	1903	38	Passenger Record Text Manifest	Scanned Manifest	Ship Image
Ciarallo, Luca	Scanno	1899	34	Passenger Record Text Manifest	Scanned Manifest	Ship Image
Ciarletta, Antonio	Scanno, Aquila	1912	20	Passenger Record Text Manifest	Scanned Manifest	Ship Image
Ciarletta (nee Gavita), Cesidia *	Scanno, Aquila	1912	24	Passenger Record Text Manifest	Scanned Manifest	Ship Image
Ciarletta, Concetta	Scanno, Aquila	1908	39	Passenger Record Text Manifest	Scanned Manifest	Ship Image
Ciarletta, Cristofaro	Scanno	1905	18	Passenger Record Text Manifest	Scanned Manifest	Ship Image
Ciarletta, Cristofaro	Scanno	1902	15	Passenger Record Text Manifest	Scanned Manifest	Ship Image
Ciarletta, Delfina *	Scanno, Aquila	1912	1	Passenger Record Text Manifest	Scanned Manifest	Ship Image
Ciarletta, Gaviero *	Scanno	1901	38	Passenger Record Text Manifest	Scanned Manifest	Ship Image
Ciarletta, Gaviero	Scanno, Aquila, Italy	1910	47	Passenger Record Text Manifest	Scanned Manifest	Ship Image
Ciarletta, Gavino	Scanno, Italy	1920	29	Passenger Record Text Manifest	Scanned Manifest	Ship Image
Ciarletta, Gioacchino	Scanno, Italy	1920	29	Passenger Record Text Manifest	Scanned Manifest	Ship Image
Ciarletta, Lorenzo	Scanno	1901	16	Passenger Record Text Manifest	Scanned Manifest	Ship Image
Ciarletta, Lucia	Scanno, Italy	1920	27	Passenger Record Text Manifest	Scanned Manifest	Ship Image
Ciarletta, M. Nunzia	Scanno, Aquila	1913	27	Passenger Record Text Manifest	Scanned Manifest	Ship Image
Ciarletta, Vincenzo	Scanno, Italy	1924	24	Passenger Record Text Manifest	Scanned Manifest	Ship Image
Ciarletta, Vittorio	Scanno	1902	41	Passenger Record Text Manifest	Scanned Manifest	Ship Image
Ciccotti, Angelo	Scanno, Italy	1924	50	Passenger Record Text Manifest	Scanned Manifest	Ship Image
Ciccotti, Domenico *	Scanno	1905	18	Passenger Record Text Manifest	Scanned Manifest	Ship Image
Domenico, Ciccotti	Scanno, Aquila	1908	22	Passenger Record Text Manifest	Scanned Manifest	Ship Image
Ciccotti, Domenico	Scanno, Italy	1912	26	Passenger Record Text Manifest	Scanned Manifest	Ship Image
Ciccotti, Domenico	Scanno, Italy	1920	33	Passenger Record Text Manifest	Scanned Manifest	Ship Image
Ciccotti, Domenico	Scanno, Italy	1924	38	Passenger Record Text Manifest	Scanned Manifest	Ship Image
Ciccotti, Emerenziana	Scanno	1905	35	Passenger Record Text Manifest	Scanned Manifest	Ship Image
Ciccotti, Eustacchio	Scanno, Italy	1920	20	Passenger Record Text Manifest	Scanned Manifest	Ship Image

Da Ciccotti Eustachio a Cosenza Primiano

Ciccotti, Filomena	Scanno, Italy	1924	19	Passenger Record Text Manifest	Scanned Manifest	Ship Image
Cipriani, Corinta	Scanno	1907	12	Passenger Record Text Manifest	Scanned Manifest	Ship Image
Cipriani - Angellone, Rosaria	Scanno, Aquila (Agnila)	1916	26	Passenger Record Text Manifest	Scanned Manifest	Ship Image
Cleto, Ottavio	Scanno	1906	40	Passenger Record Text Manifest	Scanned Manifest	Ship Image
Colaneri, Cesidio	Scanno	1902	29	Passenger Record Text Manifest	Scanned Manifest	Ship Image
Colaneri, Domenico	Scanno, Italy	1913	28	Passenger Record Text Manifest	Scanned Manifest	Ship Image
Colaneri, Domenico	Scanno, Aquila	1910	25	Passenger Record Text Manifest	Scanned Manifest	Ship Image
Colaneri, Giovanni	Scanno, Italy	1920	42	Passenger Record Text Manifest	Scanned Manifest	Ship Image
Colaneri, Guiseppi	Scanno	1903	37	Passenger Record Text Manifest	Scanned Manifest	Ship Image
Colaneri, Mariano	Scanno, Italy	1909	28	Passenger Record Text Manifest	Scanned Manifest	Ship Image
Giuseppe, Colarossi	Scanno	1905	32	Passenger Record Text Manifest	Scanned Manifest	Ship Image
Colarossi, Giuseppe *	Scanno	1905	32	Passenger Record Text Manifest	Scanned Manifest	Ship Image
Colarossi, Ida	Scanno, Italy	1920	23	Passenger Record Text Manifest	Scanned Manifest	Ship Image
Cofarossi, Luigi	Scanno	1902	16	Passenger Record Text Manifest	Scanned Manifest	Ship Image
Colasante, Angelantonio	Scanno	1910	30	Passenger Record Text Manifest	Scanned Manifest	Ship Image
Colasante, Angelantonio	Scanno, Aquila	1907	27	Passenger Record Text Manifest	Scanned Manifest	Ship Image
Colasante, Concezio	Scanno, Aquila	1912	27	Passenger Record Text Manifest	Scanned Manifest	Ship Image
Colasante, Francesco	Scanno, Italy	1913	26	Passenger Record Text Manifest	Scanned Manifest	Ship Image
Colasante, Francesco	Scanno, Italy	1923	36	Passenger Record Text Manifest	Scanned Manifest	Ship Image
Colasante, Luigi	Scanno, Aquila	1913	16	Passenger Record Text Manifest	Scanned Manifest	Ship Image
Colasante, Nicola	Scanno, Italy	1920	31	Passenger Record Text Manifest	Scanned Manifest	Ship Image
Consalvo, Leonardo	Scanno	1905	33	Passenger Record Text Manifest	Scanned Manifest	Ship Image
Conte, Primiano	Scanno	1903	48	Passenger Record Text Manifest	Scanned Manifest	Ship Image
Contelli, Giuseppe	Scanno	1901	20	Passenger Record Text Manifest	Scanned Manifest	Ship Image
Contelli, Pasquale	Scanno	1899	21	Passenger Record Text Manifest	Scanned Manifest	Ship Image
Conti, Primi...no	Scanno, Aquila	1909	52	Passenger Record Text Manifest	Scanned Manifest	Ship Image
Contilli, Flaminio	Scanno, Aquila	1921	31	Passenger Record Text Manifest	Scanned Manifest	Ship Image
Contilli, Flamminio	Scanno	1907	16	Passenger Record Text Manifest	Scanned Manifest	Ship Image
Contilli, Giuseppe	Scanno	1905	38	Passenger Record Text Manifest	Scanned Manifest	Ship Image
Contilo, Amato	Scanno, Italy	1920	24	Passenger Record Text Manifest	Scanned Manifest	Ship Image
Corradino, Corradino	Scanno, Aquila	1907	2	Passenger Record Text Manifest	Scanned Manifest	Ship Image
Cosenza, Domenico	Scanno, Italy	1910	23	Passenger Record Text Manifest	Scanned Manifest	Ship Image
Cosenza, Gerardo	Scanno	1906	40	Passenger Record Text Manifest	Scanned Manifest	Ship Image
Cosenza, Orazio	Scanno, Italy	1913	36	Passenger Record Text Manifest	Scanned Manifest	Ship Image
Cosenza, Orazio *	Scanno	1905	28	Passenger Record Text Manifest	Scanned Manifest	Ship Image
Cosenza, Primiano	Scanno, Aquila	1910	30	Passenger Record Text Manifest	Scanned Manifest	Ship Image
Cosenza, Primiano	Scanno, Italy	1920	40	Passenger Record Text Manifest	Scanned Manifest	Ship Image

Da D'Addezio Giovanni a D'Aniello Liborio

D'Addezio, Giovanni	Scanno, Aquila	1912	18	Passenger Record	Text Manifest	Scanned Manifest	Ship Image
D'Alessandro, Filippo	Scanno	1899	22	Passenger Record	Text Manifest	Scanned Manifest	Ship Image
D'Alessandro, Luigi	Scanno	1905	30	Passenger Record	Text Manifest	Scanned Manifest	Ship Image
D'Alessandro, Nicola	Scanno, Aquila	1907	21	Passenger Record	Text Manifest	Scanned Manifest	Ship Image
D'Alessandro, Panfilio	Scanno	1901	20	Passenger Record	Text Manifest	Scanned Manifest	Ship Image
D'Alessandro, Panfilo	Scanno, Italy	1920	43	Passenger Record	Text Manifest	Scanned Manifest	Ship Image
D'Alessandro, Panfilo	Scanno, Italy	1910	29	Passenger Record	Text Manifest	Scanned Manifest	Ship Image
D'Alessandro, Pompilio	Scanno, Italy	1920	39	Passenger Record	Text Manifest	Scanned Manifest	Ship Image
D'Aniello, Anna * D'Angello, Anna	Scanno	1905	19	Passenger Record	Text Manifest	Scanned Manifest	Ship Image
D'Aniello, Anna	Scanno, Italy	1920	7	Passenger Record	Text Manifest	Scanned Manifest	Ship Image
D'Aniello, Bernardo * D'Onicello, Bernardo	Scanno	1905	19	Passenger Record	Text Manifest	Scanned Manifest	Ship Image
D'Aniello, Cesaro	Scanno, Aquila	1907	29	Passenger Record	Text Manifest	Scanned Manifest	Ship Image
D'Aniello, Giovanni * D'Onicello, Giovanni	Scanno	1905	23	Passenger Record	Text Manifest	Scanned Manifest	Ship Image
D'Aniello, Giovanni * Daniello, Giovanni	Scanno, Aquila (also US)	1908	26	Passenger Record	Text Manifest	Scanned Manifest	Ship Image
D'Aniello, Liborio	Scanno, Italy	1920	40	Passenger Record	Text Manifest	Scanned Manifest	Ship Image
D'Aniello, Liborio	Scanno	1900	21	Passenger Record	Text Manifest	Scanned Manifest	Ship Image

Da D'Aniello Maria Anna a De Crescentis Orazio

D'Aniello, Maria Anna	Scanno, Italy	1920	8	Passenger Record	Text Manifest	Scanned Manifest	Ship Image
D'Aniello, Nunzia	Scanno, Italy	1920	33	Passenger Record	Text Manifest	Scanned Manifest	Ship Image
D'Aniello, Paolo	Scanno, Italy	1913	22	Passenger Record	Text Manifest	Scanned Manifest	Ship Image
D'Aniello, Pasquale	Scanno, Italy	1912	18	Passenger Record	Text Manifest	Scanned Manifest	Ship Image
D'Aprile, Carmelo	Scanno, Italy	1920	17	Passenger Record	Text Manifest	Scanned Manifest	Ship Image
D'Bartolomeo, Pasquale	Scanno, Italy	1914	26	Passenger Record	Text Manifest	Scanned Manifest	Ship Image
D'Orazio, Antonio	Scanno	1894	42	Passenger Record	Text Manifest	Scanned Manifest	Ship Image
De Crescentis (De Crescentis), Orazio							

Da D'Aniello Cesare a Di Cesare Flavio

Di Aniello, Cesare *	Scanno, Aquila	1912	29	Passenger Record Text Manifest Scanned Manifest Ship Image
Di Aniello, Cesare	Scanno, Aquila	1907	25	Passenger Record Text Manifest Scanned Manifest Ship Image
Di Aniello, Sabina	Scanno, Italy	1924	29	Passenger Record Text Manifest Scanned Manifest Ship Image
Di Bartolo, Anselmo	Scanno, Italy	1913	24	Passenger Record Text Manifest Scanned Manifest Ship Image
Di Bartolo, Nunziato	Scanno, Italy	1913	26	Passenger Record Text Manifest Scanned Manifest Ship Image
Di Bartolomeo, Anna	Scanno, Aquila	1910	25	Passenger Record Text Manifest Scanned Manifest Ship Image
Di Bartolomeo, Antonio	Scanno	1903	16	Passenger Record Text Manifest Scanned Manifest Ship Image
Di Bartolomeo, Francesco	Scanno, Italy	1913	36	Passenger Record Text Manifest Scanned Manifest Ship Image
Di Bartolomeo, Gemma	Scanno,	1904	6	Passenger Record Text Manifest Scanned Manifest Ship Image
Di Bartolomeo, Giovanni	Scanno	1900	27	Passenger Record Text Manifest Scanned Manifest Ship Image
Di Benedetto, Nicola	Scanno	1901	22	Passenger Record Text Manifest Scanned Manifest Ship Image
Di Benedetto, Rocco	Scanno	1901	12	Passenger Record Text Manifest Scanned Manifest Ship Image
Di Benedetto, Salvatore	Scanno	1902	35	Passenger Record Text Manifest Scanned Manifest Ship Image
Di Benedetto, Salvatore	Scanno	1901	33	Passenger Record Text Manifest Scanned Manifest Ship Image
Di Benedetto, Vittorio	Scanno	1920	19	Passenger Record Text Manifest Scanned Manifest Ship Image
Di Benedetto, Gerardo	Scanno, Italy	1913	38	Passenger Record Text Manifest Scanned Manifest Ship Image
Di Cesare, Angelo	Scanno, Italy	1912	17	Passenger Record Text Manifest Scanned Manifest Ship Image
Di Cesare, Costanzo	Scanno	1906	25	Passenger Record Text Manifest Scanned Manifest Ship Image
Di Cesare, Domenico	Scanno, Aquila, Italy	1912	35	Passenger Record Text Manifest Scanned Manifest Ship Image
Di Cesare, Domenico	Scanno, Italy	1920	16	Passenger Record Text Manifest Scanned Manifest Ship image
Di Cesare, Flavio	Scanno, Italy	1911	21	Passenger Record Text Manifest Scanned Manifest Ship Image

Da Di Cesare Francesco a Di Lorenzo Antonio

Di Cesare, Francesco	Scanno, Italy	1911	27	Passenger Record Text Manifest Scanned Manifest Ship Image
Di Cesare, Leone	Scanno, Aquila	1909	21	Passenger Record Text Manifest Scanned Manifest Ship Image
Di Cesare, Leone *	Scanno, Italy	1913	26	Passenger Record Text Manifest Scanned Manifest Ship Image
Di Cezaro, Leone	Scanno, Italy	1913	26	Passenger Record Text Manifest Scanned Manifest Ship Image
Di Cesare, Luciano *	Scanno, Italy	1923	18	Passenger Record Text Manifest Scanned Manifest Ship Image
Di Cesara, Luciano	Scanno, Italy	1923	18	Passenger Record Text Manifest Scanned Manifest Ship Image
Di Cesare, Mariano	Scanno, Italy	1912	19	Passenger Record Text Manifest Scanned Manifest Ship Image
Di Cesare, Nunzia	Scanno, Italy	1920	32	Passenger Record Text Manifest Scanned Manifest Ship Image
Di Cesare, Nunzio	Scanno, Italy	1911	44	Passenger Record Text Manifest Scanned Manifest Ship Image
Di Cesare, Paolo	Scanno, Italy	1913	31	Passenger Record Text Manifest Scanned Manifest Ship Image
di Cesare, Paolo	Scanno	1905	23	Passenger Record Text Manifest Scanned Manifest Ship Image
Di Cesare, Pasquale	Scanno	1906	30	Passenger Record Text Manifest Scanned Manifest Ship Image
Di Cesare, Pasquale *	Scanno, Aquila	1909	32	Passenger Record Text Manifest Scanned Manifest Ship Image
Di Cesaro, Pasquale	Scanno, Aquila	1909	32	Passenger Record Text Manifest Scanned Manifest Ship Image
Di Cesare, Pasquale Antonio	Scanno, Italy	1924	33	Passenger Record Text Manifest Scanned Manifest Ship Image
Di Cesare, Salvatore *	Scanno, Italy	1923	48	Passenger Record Text Manifest Scanned Manifest Ship Image
Di Casare, Salvatore	Scanno, Italy	1923	48	Passenger Record Text Manifest Scanned Manifest Ship Image
Di Cesare, Salvatore	Scanno, Italy	1911	37	Passenger Record Text Manifest Scanned Manifest Ship Image
di Clemente, Andrea	Scanno	1902	42	Passenger Record Text Manifest Scanned Manifest Ship Image
di Clemente, Ilario	Scanno	1902	19	Passenger Record Text Manifest Scanned Manifest Ship Image
Di Clemente, Ludovico	Scanno	1903	20	Passenger Record Text Manifest Scanned Manifest Ship Image
di Clemente, Nunzio	Scanno	1902	45	Passenger Record Text Manifest Scanned Manifest Ship Image
Di Clemente, Panfilo	Scanno	1903	15	Passenger Record Text Manifest Scanned Manifest Ship Image
di Clemente, Pasqualino	Scanno	1902	14	Passenger Record Text Manifest Scanned Manifest Ship Image
di Clemente, Pietro	Scanno	1902	19	Passenger Record Text Manifest Scanned Manifest Ship Image
di Crescentiis, Pietro	Scanno	1902	22	Passenger Record Text Manifest Scanned Manifest Ship Image
Di Felice, Giovanni	Scanno, Aquila	1910	17	Passenger Record Text Manifest Scanned Manifest Ship Image
Di Gennaro, Angelo	Scanno, Italy	1913	31	Passenger Record Text Manifest Scanned Manifest Ship Image
Di Gennaro, Angelo	Scanno, Aquila	1910	28	Passenger Record Text Manifest Scanned Manifest Ship Image
Di Gennaro, Angelo	Scanno	1907	25	Passenger Record Text Manifest Scanned Manifest Ship Image
Di Gennaro, Gabriele	Scanno, Aquila	1911	26	Passenger Record Text Manifest Scanned Manifest Ship Image
Di Giulio, Nicola	Scanno, Aquila	1910	32	Passenger Record Text Manifest Scanned Manifest Ship Image
Di Lorenzo, Antonio	Scanno, Aquila	1908	26	Passenger Record Text Manifest Scanned Manifest Ship Image
Di Lorenzo, Antonio	Scanno	1905	23	Passenger Record Text Manifest Scanned Manifest Ship Image

Da Di Lorenzo Gennaro a Di Masso Ilario

Di Lorenzo, Gennaro	Scanno, Italy	1913	20	Passenger Record Text Manifest Scanned Manifest Ship Image
Di Marco, Domenico	Scanno	1899	37	Passenger Record Text Manifest Scanned Manifest Ship Image
Di Marco, Domenico	Scanno	1902	40	Passenger Record Text Manifest Scanned Manifest Ship Image
Di Marco, Panfilo *	Scanno	1906	16	Passenger Record Text Manifest Scanned Manifest Ship Image
Di Mareo, Panfilo	Scanno	1906	16	Passenger Record Text Manifest Scanned Manifest Ship Image
Di Masso, Giovanni *	Scanno, Aquila	1908	22	Passenger Record Text Manifest Scanned Manifest Ship Image
Di Massa, Giovanni	Scanno, Aquila	1908	22	Passenger Record Text Manifest Scanned Manifest Ship Image
Di Masso, Giovanni	Scanno	1901	15	Passenger Record Text Manifest Scanned Manifest Ship Image
Di Masso, Guiseppe	Scanno	1901	44	Passenger Record Text Manifest Scanned Manifest Ship Image
Di Masso, Ilario	Scanno, Italy	1920	7	Passenger Record Text Manifest Scanned Manifest Ship Image

Da Di Masso Michele a Di Turno Donato

Di Masso, Michele	Scanno	1901	18	Passenger Record Text Manifest Scanned Manifest Ship Image
Di Masso, Pasquale	Scanno, Italy	1920	28	Passenger Record Text Manifest Scanned Manifest Ship Image
Di Masso, Tommaso	Scanno, Italy	1907	31	Passenger Record Text Manifest Scanned Manifest Ship Image
Di Masso, Tommasso	Scanno	1906	31	Passenger Record Text Manifest Scanned Manifest Ship Image
Di Paolo, Luigi	Scanno	1903	14	Passenger Record Text Manifest Scanned Manifest Ship Image
Di Paolo (nee ?Garchetti), Maria *	Scanno	1903	42	Passenger Record Text Manifest Scanned Manifest Ship Image
Di Rienzo, Clotilde	Scanno, Italy	1924	31	Passenger Record Text Manifest Scanned Manifest Ship Image
Di Rienzo, Felice * Di Ricuzo, Felice	Scanno	1906	15	Passenger Record Text Manifest Scanned Manifest Ship Image
Di Rienzo, Antonio	Scanno, It.	1916	2	Passenger Record Text Manifest Scanned Manifest Ship Image
Di Rienzo, Felice Antonio	Scanno, It.	1916	24	Passenger Record Text Manifest Scanned Manifest Ship Image
Di Rienzo, Guiseppina	Scanno, It.	1916	1	Passenger Record Text Manifest Scanned Manifest Ship Image
Di Rienzo, Maria Guiseppa Merlo	Scanno, It.	1916	23	Passenger Record Text Manifest Scanned Manifest Ship Image
Di Rienzo, Valentino	Scanno, Italy	1920	31	Passenger Record Text Manifest Scanned Manifest Ship Image
Di Rocco, Filomena	Scanno, Italy	1924	24	Passenger Record Text Manifest Scanned Manifest Ship Image
di Rocco, Pasquale	Scanno, Italy	1920	18	Passenger Record Text Manifest Scanned Manifest Ship Image
Di Silfo, Orazio	Scanno	1906	30	Passenger Record Text Manifest Scanned Manifest Ship Image
Di Stiso, Alessandro * Di Stisio, Alessandro	Scanno	1906	10	Passenger Record Text Manifest Scanned Manifest Ship Image
Di Stiso, Anacleto * Di Stisio, Anacleto	Scanno	1906	15	Passenger Record Text Manifest Scanned Manifest Ship Image
Di Stiso, Emilio	Scanno, Italy	1920	23	Passenger Record Text Manifest Scanned Manifest Ship Image
Di Stiso, Filomena Santucci	Scanno	1906	34	Passenger Record Text Manifest Scanned Manifest Ship Image
Di Stiso, Francesco	Scanno Scameo	1905	39	Passenger Record Text Manifest Scanned Manifest Ship Image
Di Stiso, Giovanni	Scanno Scameo	1905	12	Passenger Record Text Manifest Scanned Manifest Ship Image
Di Stiso, Lucia * Di Stisio, Lucia	Scanno	1906	1	Passenger Record Text Manifest Scanned Manifest Ship Image
Di Stiso, Mariano	Scanno * Scan...	1899	45	Passenger Record Text Manifest Scanned Manifest Ship Image
Di Turno, Alberto	Scanno, Italy	1921	8	Passenger Record Text Manifest Scanned Manifest Ship Image
Di Turno, Antonio	Scanno, Italy	1921	18	Passenger Record Text Manifest Scanned Manifest Ship Image
Di Turno, Donato	Scanno, Aquila	1913	33	Passenger Record Text Manifest Scanned Manifest Ship Image
Di Turno, Donato	Scanno	1907	26	Passenger Record Text Manifest Scanned Manifest Ship Image

Da Di Turno Maria Giuseppa a Eustacchio Serafino (?)

Di Turno, Maria Giuseppa *	Scanno, Aquila	1912	31	Passenger Record Text Manifest Scanned Manifest Ship Image
Di Ternio, Ma. Giuseppa	Aquila			
Di Turno, Nicola *	Scanno, Aquila	1907	23	Passenger Record Text Manifest Scanned Manifest Ship Image
Di Eurno, Nicola	Aquila			
Di Vincentio, Guiseppe	Scanno, Aquila	1909	31	Passenger Record Text Manifest Scanned Manifest Ship Image
Di Vincenzo, Pietro	Scanno	1903	12	Passenger Record Text Manifest Scanned Manifest Ship Image
Di Vitto, Domenico	Scanno, Aquila	1910	26	Passenger Record Text Manifest Scanned Manifest Ship Image
Di Zillo, Orazio *	Scanno	1893	17	Passenger Record Text Manifest Scanned Manifest Ship Image
Di Zello, Orazio				
Di Zillo, Alfonso	Scanno	1903	30	Passenger Record Text Manifest Scanned Manifest Ship Image
Di Zillo, Americo	Scanno, Italy	1914	35	Passenger Record Text Manifest Scanned Manifest Ship Image
Di Zillo, Ruggiero	Scanno	1899	19	Passenger Record Text Manifest Scanned Manifest Ship Image
DiBartolomeo, Angelo	Scanno	1910	22	Passenger Record Text Manifest Scanned Manifest Ship Image
DiBartolomeo, Domenico	Scanno, Aquila	1909	27	Passenger Record Text Manifest Scanned Manifest Ship Image
DiCesare, Eustacchio	Scanno	1901	20	Passenger Record Text Manifest Scanned Manifest Ship Image
DiCesare, Leone	Scanno	1905	18	Passenger Record Text Manifest Scanned Manifest Ship Image
DiCesare, Nunzio	Scanno	1901	34	Passenger Record Text Manifest Scanned Manifest Ship Image
DiCesaro, Pasquale	Scanno	1900	30	Passenger Record Text Manifest Scanned Manifest Ship Image
DiClemente, Agata	Scanno, Aquila	1909	38	Passenger Record Text Manifest Scanned Manifest Ship Image
DiClemente, Pietro	Scanno, Italy	1913	30	Passenger Record Text Manifest Scanned Manifest Ship Image
DiMarco, Giuseppe	Scanno	1899	33	Passenger Record Text Manifest Scanned Manifest Ship Image
DiMassa, Alberto	Scanno	1901	10	Passenger Record Text Manifest Scanned Manifest Ship Image
DiMassa, Eustacchio	Scanno	1901	34	Passenger Record Text Manifest Scanned Manifest Ship Image
Dimasso, Girmano	Scanno, Aquila	1913	52	Passenger Record Text Manifest Scanned Manifest Ship Image
Di'Orazio, Antonio	Scanno	1900	46	Passenger Record Text Manifest Scanned Manifest Ship Image
D'Orazio, Corstito	Scanno	1905	43	Passenger Record Text Manifest Scanned Manifest Ship Image
Eustacchio, Serafino	Scanno, Aquila	1909	26	Passenger Record Text Manifest Scanned Manifest Ship Image

Da Galante Camillo a Gentile Marco

Galante, Camillo	Scanno, Aquila	1907	16	Passenger Record Text Manifest	Scanned Manifest Ship Image
Galante, Domenicantonio	Scanno	1903	36	Passenger Record Text Manifest	Scanned Manifest Ship Image
Galante, Domenico	Scanno, Italy	1920	42	Passenger Record Text Manifest	Scanned Manifest Ship Image
Galante, Emilio	Scanno, Aquila (Aginta)	1910	20	Passenger Record Text Manifest	Scanned Manifest Ship Image
Galante, Giuseppa	Scanno, Aquila	1907	60	Passenger Record Text Manifest	Scanned Manifest Ship Image
Galante, Leonardo	Scanno, Aquila	1910	32	Passenger Record Text Manifest	Scanned Manifest Ship Image
Galante, Mariano	Scanno	1901	31	Passenger Record Text Manifest	Scanned Manifest Ship image
Galante, Mariano *	Scanno	1905	35	Passenger Record Text Manifest	Scanned Manifest Ship Image
Galante, Mariano	Scanno, Aquila	1907	29	Passenger Record Text Manifest	Scanned Manifest Ship Image
Galante, Pasquale	Scanno, Aginta	1910	16	Passenger Record Text Manifest	Scanned Manifest Ship image
Galante, Raffaele	Scanno, Aquila	1910	16	Passenger Record Text Manifest	Scanned Manifest Ship image
Galante, Vincenzo	Scanno, Italy	1920	33	Passenger Record Text Manifest	Scanned Manifest Ship Image
Galante, Vincenzo *	Scanno, Aquila	1909	22	Passenger Record Text Manifest	Scanned Manifest Ship Image
Galanti, Vincenzo	Scanno, Aquila	1909	22	Passenger Record Text Manifest	Scanned Manifest Ship Image
Galante, Domenico *	Scanno, Italy	1914	35	Passenger Record Text Manifest	Scanned Manifest Ship Image
Galanto, Domenico	Scanno, Italy	1913	22	Passenger Record Text Manifest	Scanned Manifest Ship image
Gandentio, Petracco Petrocco, G--- * to Waltham, Mass brother-in-law Ilario Ciarletta	Scanno, Italy	1913	22	Passenger Record Text Manifest	Scanned Manifest Ship image
Gavita (Ciarletta), Cesidia	Scanno, Aquila	1912	24	Passenger Record Text Manifest	Scanned Manifest Ship Image
Gavita, Creole	Scanno	1905	41	Passenger Record Text Manifest	Scanned Manifest Ship Image
Gavita, Domenico	Scanno	1906	36	Passenger Record Text Manifest	Scanned Manifest Ship Image
Gavita, Domenico	Scanno, Aquila	1910	40	Passenger Record Text Manifest	Scanned Manifest Ship image
Gavita, Filippo	Scanno	1906	31	Passenger Record Text Manifest	Scanned Manifest Ship Image
Gavita, Giuseppe	Scanno, Italy	1924	30	Passenger Record Text Manifest	Scanned Manifest Ship Image
Gavita, Maria *	Scanno, Italy	1907	15	Passenger Record Text Manifest	Scanned Manifest Ship Image
Maris	Scanno, Italy	1907	15	Passenger Record Text Manifest	Scanned Manifest Ship Image
Gavita, Nunzio	SCANNO	1905	16	Passenger Record Text Manifest	Scanned Manifest Ship Image
Gavita, Ottavio *	Scanno * Scarino	1907	18	* Text Manifest	
Gavita, Panfilo *	Scanno	1905	18	Passenger Record Text Manifest	Scanned Manifest Ship image
Paufilo, Gavito	Scanno	1905	18	Passenger Record Text Manifest	Scanned Manifest Ship image
Gavita, Pasquale	Scanno	1907	17	Passenger Record Text Manifest	Scanned Manifest Ship Image
Gavita, Pasquale	Scanno, Italy	1920	31	Passenger Record Text Manifest	Scanned Manifest Ship Image
Gentile, Amato	Scanno, Aquila	1912	17	Passenger Record Text Manifest	Scanned Manifest Ship Image
Gentile, Armando	Scanno, Italy	1920	23	Passenger Record Text Manifest	Scanned Manifest Ship Image
Gentile, Donato	Scanno, Italy	1923	27	Passenger Record Text Manifest	Scanned Manifest Ship Image
Gentile, Marco	Scanno	1900	37	Passenger Record Text Manifest	Scanned Manifest Ship Image

Da Gentile Pasquale a Giovanelli Secondino (1909)

Gentile, Pasquale	Scanno	1905	31	Passenger Record Text Manifest	Scanned Manifest Ship Image
Gentile, Pasquale	Scanno	1902	29	Passenger Record Text Manifest	Scanned Manifest Ship Image
Gentile, Vincenza	Scanno	1901	25	Passenger Record Text Manifest	Scanned Manifest Ship Image
Gerardo, Ariolo	Scanno	1901	38	Passenger Record Text Manifest	Scanned Manifest Ship Image
Gia..., Dicofos Giann...	Scanno to Pittsburgh Scannos	1901	30	Passenger Record Text Manifest	Scanned Manifest Ship Image
Giandonato, Costanzo	Scanno, Italy	1922	17	Passenger Record Text Manifest	Scanned Manifest Ship Image
Giandonato, Enrico	Scanno	1902	24	Passenger Record Text Manifest	Scanned Manifest Ship Image
Giandonato, Giovanni	Scanno, Italy	1922	14	Passenger Record Text Manifest	Scanned Manifest Ship Image
Giandonato, Pasquale *	Scanno, Italy	1910	33	Passenger Record Text Manifest	Scanned Manifest Ship Image
Grandonato, Pasquale	Scanno	1901	29	Passenger Record Text Manifest	Scanned Manifest Ship Image
Giandonato, Pasquale *	Scanno	1907	31	Passenger Record Text Manifest	Scanned Manifest Ship Image
Giandanato, Pasquale	Scanno, Italy	1910	33	Passenger Record Text Manifest	Scanned Manifest Ship Image
Giantonato, Pasquale	Scanno	1893	23	Passenger Record Text Manifest	Scanned Manifest Ship Image
Gianferrante, Nunzio	Scanno, Italy	1913	35	Passenger Record Text Manifest	Scanned Manifest Ship Image
Giannamore Buccini, Angela *	Scanno, Italy	1923	17	Passenger Record Text Manifest	Scanned Manifest Ship Image
Giannamore, Angelico	Scanno	1905	33	Passenger Record Text Manifest	Scanned Manifest Ship Image
Giannamore, Flaminia *	(Scainco)to WY				
Giansante, Pasquale (Giansonte, Pasquale)	Scanno	1902	29	Passenger Record Text Manifest	Scanned Manifest Ship Image
Gilberto, Rozzi Rozzi, Gilberto *	Scanno	1902	33	Passenger Record Text Manifest	Scanned Manifest Ship Image
Giliberti, Michelina	Scanno	1905	39	Passenger Record Text Manifest	Scanned Manifest Ship Image
Giovanelli, Gesualdo (Gianearelli, Gesualdo)	Scanno	1896	42	Passenger Record Text Manifest	Scanned Manifest Ship Image Patria
Giovanelli, Michele	Scanno	1903	22	Passenger Record Text Manifest	Scanned Manifest Ship Image
Giovannelli, Carmelo	Scanno, Aquila	1908	21	Passenger Record Text Manifest	Scanned Manifest Ship Image
Giovannelli, Francesco	Scanno, Italy	1917	34	Passenger Record Text Manifest	Scanned Manifest Ship Image
Giovannelli, Panfilo	Scanno, Aquila	1909	18	Passenger Record Text Manifest	Scanned Manifest Ship Image
Giovanelli, Ruggiero (Giovanerelli, Ruggiero)	Scanno	1902	33	Passenger Record Text Manifest	Scanned Manifest Ship Image
Giovannelli, Ruggeiro	Scanno	1899	30	Passenger Record Text Manifest	Scanned Manifest Ship Image
Giovanelli, Secondino (Giovannatti, Lecondino)	Scanno, Aquila	1909	42	Passenger Record Text Manifest	Scanned Manifest Ship Image

Da Giovannelli Secondino (1901) a Gianferrante Nunzio

Giovannelli, Secondino	Scanno	1901	34	Passenger Record Text Manifest	Scanned Manifest Ship Image
Giovannelli, Valentino	Scanno	1903	16	Passenger Record Text Manifest	Scanned Manifest Ship Image
Quaglione, Giovanni (Giovanni, Anaglione)	Scanno	1905	28	Passenger Record Text Manifest	Scanned Manifest Ship Image
Colarossi, Giuseppe (Giuseppe, Colarossi)	Scanno	1905	32	Passenger Record Text Manifest	Scanned Manifest Ship Image
Granferrante, Domenico	Scanno	1900	36	Passenger Record Text Manifest	Scanned Manifest Ship Image
Gianferrante, Nunzio (Granferrante, Nunzio)	Scanno	1907	33	Passenger Record Text Manifest	Scanned Manifest Ship Image

Da Gualtieri Liborio a Jannessa Eustachio

Gualtieri, Liborio	Scanno	1906	32	Passenger Record Text Manifest	Scanned Manifest Ship Image
Gualtieri, Rocco	Scanno	1901	24	Passenger Record Text Manifest	Scanned Manifest Ship Image
Gualtieri, Rocco	Scanno, Italy	1916	39	Passenger Record Text Manifest	Scanned Manifest Ship Image
Quaglione, Giuseppe (Giuseppe, Anaglione)	Scanno	1905	36	Passenger Record Text Manifest	Scanned Manifest Ship Image
Santilli, Giuseppe (Giuseppe, Santilli)	Scanno	1905	26	Passenger Record Text Manifest	Scanned Manifest Ship Image
Silla, Giuseppe (Giuseppe, Sillo)	Scanno	1905	30	Passenger Record Text Manifest	Scanned Manifest Ship Image
Iafolla, Nunzio	Scanno	1903	24	Passenger Record Text Manifest	Scanned Manifest Ship Image
Imboucone, Aurelia	Scanno	1899	61	Passenger Record Text Manifest	Scanned Manifest Ship Image
Quaglione, Telmo (Inaglione, Telmo)	Scanno, Italy	1914	38	Passenger Record Text Manifest	Scanned Manifest Ship Image
Iorio, Nunzio	Scanno	1903	31	Passenger Record Text Manifest	Scanned Manifest Ship Image
Jannessa, Eustachio	Scanno	1903	18	Passenger Record Text Manifest	Scanned Manifest Ship Image

Da La Marca Nazzareno a Lancione Bonifacio (1902)

La Marca, Nazzareno	Scanno	1903	12	Passenger Record Text Manifest Scanned Manifest Ship Image
La Marea, Fabio	Scanno, Aquila (Aquila)	1908	11	Passenger Record Text Manifest Scanned Manifest Ship Image
La Marea, Feliciano	Scanno, Aquila (Aquila)	1908	48	Passenger Record Text Manifest Scanned Manifest Ship Image
La Morticella, Aniceto	Scanno, Aquila	1911	24	Passenger Record Text Manifest Scanned Manifest Ship Image
La Morticella, Pasquale	Scanno	1903	21	Passenger Record Text Manifest Scanned Manifest Ship Image
LaMorticella, Pietro *	Scanno, Aquila (Aquila)	1909	36	Passenger Record Text Manifest Scanned Manifest Ship Image
Lancione, Angelo to Boston	Scanno, Italy	April 13, 1900	39	Passenger Record Text Manifest Scanned Manifest Ship Image
Lancione, Antonio	Scanno, Italy	1920	15	Passenger Record Text Manifest Scanned Manifest Ship Image
Lancione, Beatrice husband Nannarone	Scanno, Aquila (Sanno, Aquila)	August 23, 1910	30	Passenger Record Text Manifest Scanned Manifest Ship Image
Lancione, Bonifacio	Scanno	1902	25	Passenger Record Text Manifest Scanned Manifest Ship Image

Da Lancione Bonifacio (1905) a Lancione Eustachio

Lancione, Bonifacio	Scanno	1905	28	Passenger Record Text Manifest Scanned Manifest Ship Image
Lancione, Bonifacio to brother Francesco in Ohio	Scanno, Aquila (Scaicco, Aquila)	October 23, 1907	30	Passenger Record Text Manifest Scanned Manifest Ship Image
Lancione, Bonifacio (Bonificio)	Scanno, Aquila (Aguilo)	1913	35	Passenger Record Text Manifest Scanned Manifest Ship Image
Lancione, Eustachio to Coraopolis, PA brother Niccla Lancione	Scanno, Italy (Scamio, Italy)	July 17, 1916	36	Passenger Record Text Manifest Scanned Manifest Ship Image

Da Lancione Gregorio a Lancione Nunzio (1901)

Lancione, Gregorio to Boston	U. S.	December 21, 1910	35	Passenger Record Text Manifest Scanned Manifest Ship Image
Lancione, Gregorio	Scanno, Italy	1916	41	Passenger Record Text Manifest Scanned Manifest Ship Image
Lancione, Guiseppe	Scanno	1901	21	Passenger Record Text Manifest Scanned Manifest Ship Image
Lancione, Guiseppe N. to Baltimore	Baltimore	December 03, 1909	29	Passenger Record Text Manifest Scanned Manifest Ship Image
Lancione, Liboria	Scanno, Italy	1920	34	Passenger Record Text Manifest Scanned Manifest Ship Image
Lancione, Lorenza	Scanno, Italy	1920	9	Passenger Record Text Manifest Scanned Manifest Ship Image
Lancione, Luigi	Scanno, Italy	1920	11	Passenger Record Text Manifest Scanned Manifest Ship Image
Lancione, Maria	Scanno, Italy	1920	23	Passenger Record Text Manifest Scanned Manifest Ship Image
Lancione, Nicola * (Laneiano, Nicola)	Scanno	1900	27	Passenger Record Text Manifest Scanned Manifest Ship Image
Lancione, Nicola	Scanno, Aquila	1913	40	Passenger Record Text Manifest Scanned Manifest Ship Image
Lancione, Nicola *	Scanno	1906	33	Passenger Record Text Manifest Scanned Manifest Ship Image
Lancione, Nicola	Scanno, Aquila	1907	43	Passenger Record Text Manifest Scanned Manifest Ship Image
Lancione, Nunzio *	Scanno	1901	33	Passenger Record Text Manifest Scanned Manifest Ship Image

Da Lancione Nunzio (1905) a Lancione Romeo

Lancione, Nunzio *	Scanno	1905	37	Passenger Record Text Manifest Scanned Manifest Ship Image
Lancione, Nunzio	Scanno, Italy	1911	43	Passenger Record Text Manifest Scanned Manifest Ship Image
Lancione, Orazio	Scanno, Italy	1916	14	Passenger Record Text Manifest Scanned Manifest Ship Image
Lancione, Paola	Scanno, Aquila (Sanno, Aquila)	August 23, 1910	30	Passenger Record Text Manifest Scanned Manifest Ship Image
Lancione, Pasquale*	Scanno	1905	21	Passenger Record Text Manifest Scanned Manifest Ship Image
Lancione, Romeo	Scanno, Italy	1920	13	Passenger Record Text Manifest Scanned Manifest Ship Image

Da Lancione Silvestro a Leopardi Paolo

Lancione, Silvestro	Scanno, Italy	1913	19	Passenger Record Text Manifest Scanned Manifest Ship Image
Lancione, Valeriano to Chicago Uncle Cesidio Serafini	Scanno, Italy (...anno, Italy)	March 17, 1914	17	Passenger Record Text Manifest Scanned Manifest Ship Image
Lancione, Vincenzo to mother Carmina	Scanno, Italy (Seanno, Italy)	July 25, 1910	24	Passenger Record Text Manifest Scanned Manifest Ship Image
Santilli, Paolo * (Lantilli, Paolo)	Scanno, Aquila (Aquila)	1909	23	Passenger Record Text Manifest Scanned Manifest Ship Image
Lastracco, Collisto	Scanno, Aquila	1907	23	Passenger Record Text Manifest Scanned Manifest Ship Image
Lavillotti, Domenico	Scanno, Italy	1913	39	Passenger Record Text Manifest Scanned Manifest Ship Image
Lavillotti, Ilario *	Scanno	1905	35	Passenger Record Text Manifest Scanned Manifest Ship Image
Lavolatti, Mariano	Scanno, Italy	1914	22	Passenger Record Text Manifest Scanned Manifest Ship Image
Lecce, Maria	Scanno	1905	17	Passenger Record Text Manifest Scanned Manifest Ship Image
Leopardi, Giuseppe	Scanno, Aquila (Aquila)	1909	21	Passenger Record Text Manifest Scanned Manifest Ship Image
Leopardi, Paolo	Scanno, Italy	1911	21	Passenger Record Text Manifest Scanned Manifest Ship Image

Da Leopardo Liborio a Lilla (?) Lucio

Leopardo, Liborio	Scanno	1905	21	Passenger Record Text Manifest Scanned Manifest Ship Image
Leopoldo, Ilario *	Scanno	1905	27	Passenger Record Text Manifest Scanned Manifest Ship Image
Lilla, Aniceto *	Scanno	1905	21	Passenger Record Text Manifest Scanned Manifest Ship Image
Lilla, Carmelo	Scanno, Italy	1910	18	Passenger Record Text Manifest Scanned Manifest Ship Image
Lilla, Lucio *	Scanno	1905	25	Passenger Record Text Manifest Scanned Manifest Ship Image

Da Macario Eustachio a Mancinelli Pio

Macario, Eustachio	Scanno	1900	38	Passenger Record Text Manifest	Scanned Manifest Ship Image
Mácario, Eustachio	Scanno	1905	43	Passenger Record Text Manifest	Scanned Manifest Ship Image
Macario, Eustachio *	Scanno, Aquila (Aquole)	1909	27	Passenger Record Text Manifest	Scanned Manifest Ship Image
Macario, Custoeirio	Scanno, Aquila, It.	1909	27	Passenger Record Text Manifest	Scanned Manifest Ship Image
Macario, Flavio	Scanno	1905	20	Passenger Record Text Manifest	Scanned Manifest Ship Image
Macario, Mariano *	Scanno	1907	27	Passenger Record Text Manifest	Scanned Manifest Ship Image
Marcario, Mariano brother Ilario	Scanno, Aquila (Aquole)	1909	19	Passenger Record Text Manifest	Scanned Manifest Ship Image
Macario, Nicolo	Scanno, Italy	1913	26	Passenger Record Text Manifest	Scanned Manifest Ship Image
Macario ?, Pietro *	Scanno, Italy	1910	17	Passenger Record Text Manifest	Scanned Manifest Ship Image
Maiocoe, Pietro	Scanno, Italy	1910	17	Passenger Record Text Manifest	Scanned Manifest Ship Image
Destination PA Cousin Nunzio La Marca Father Fidele	Scanno, Italy	1910	17	Passenger Record Text Manifest	Scanned Manifest Ship Image
Mancinelli, Addolorata *	Scanno, Italy	1913	18	Passenger Record Text Manifest	Scanned Manifest Ship Image
Maneinelli, Addolorata	Scanno, Italy	1921	22	Passenger Record Text Manifest	Scanned Manifest Ship Image
Mancinelli, Angelo Raffaele	Scanno, Italy	1921	22	Passenger Record Text Manifest	Scanned Manifest Ship Image
Mancinelli, Anna *	Scanno, Italy	1913	20	Passenger Record Text Manifest	Scanned Manifest Ship Image
Maneinella, Anna	Scanno, Italy	1913	20	Passenger Record Text Manifest	Scanned Manifest Ship Image
Mancinelli, Candido *	Scanno, Italy	1913	10	Passenger Record Text Manifest	Scanned Manifest Ship Image
Maneinelle, Candido	Scanno, Italy	1913	10	Passenger Record Text Manifest	Scanned Manifest Ship Image
Mancinelli, Carmela *	Scanno, Italy	1913	7	Passenger Record Text Manifest	Scanned Manifest Ship Image
Maneinello, Carmela	Scanno, Italy	1913	7	Passenger Record Text Manifest	Scanned Manifest Ship Image
Mancinelli, Comadino(sp) *	Scanno	1898	15	Passenger Record Text Manifest	Scanned Manifest Ship Image
Mancircolli, Comedino	Scanno	1905	7	Passenger Record Text Manifest	Scanned Manifest Ship Image
Mancinelli, Eleonora	Scanno	1920	26	Passenger Record Text Manifest	Scanned Manifest Ship Image
Mancinelli, Genaro	Scanno	1905	3	Passenger Record Text Manifest	Scanned Manifest Ship Image
Mancinelli, Leonelda	Scanno, Italy	1913	55	Passenger Record Text Manifest	Scanned Manifest Ship Image
Mancinelli, Liborio *	Scanno, Italy	1919	27	Passenger Record Text Manifest	Scanned Manifest Ship Image
Manerelli, Liborio	Scanno	1893	29	Passenger Record Text Manifest	Scanned Manifest Ship Image
Mancinelli, Luigi *	Scanno	1903	39	Passenger Record Text Manifest	Scanned Manifest Ship Image
Manc...elli, Luigi	Scanno	1905	12	Passenger Record Text Manifest	Scanned Manifest Ship Image
Mancinelli, Luigi *	Scanno, Italy	1913	13	Passenger Record Text Manifest	Scanned Manifest Ship Image
Mananelli, Luigi	Scanno, Italy	1913	13	Passenger Record Text Manifest	Scanned Manifest Ship Image
Mancinelli, Maria	Scanno	1902	16	Passenger Record Text Manifest	Scanned Manifest Ship Image
Mancinelli, Pietro *	Scanno	1902	16	Passenger Record Text Manifest	Scanned Manifest Ship Image
Maneinelli, Pietro	Scanno	1902	16	Passenger Record Text Manifest	Scanned Manifest Ship Image
Mancinelli, Pio *	Scanno	1902	16	Passenger Record Text Manifest	Scanned Manifest Ship Image
...inelli, Pio	Scanno	1902	16	Passenger Record Text Manifest	Scanned Manifest Ship Image

Da Mancinelli Rosata a Mancini Luigi

Mancinelli, Rosata *	Scanno, Italy	1913	40	Passenger Record Text Manifest	Scanned Manifest Ship Image
Narullion, Rosata Destination son's home Steubenville, OH	Scanno, Italy	1913	40	Passenger Record Text Manifest	Scanned Manifest Ship Image
Mancinelli, Zito (Maneinelli, Zeto)	Scanno, Italy	1913	16	Passenger Record Text Manifest	Scanned Manifest Ship Image
Mancini, Alberto	Scanno, Italy	1920	36	Passenger Record Text Manifest	Scanned Manifest Ship Image
Mancini, Alberto	Scanno	1905	20	Passenger Record Text Manifest	Scanned Manifest Ship Image
Mancini, Angela	Scanno, Aquila (Acquila)	1913	9	Passenger Record Text Manifest	Scanned Manifest Ship Image
Mancini, Canidio	Scanno, Aquila	1912	18	Passenger Record Text Manifest	Scanned Manifest Ship Image
Mancini, Carlo	Scanno	1905	17	Passenger Record Text Manifest	Scanned Manifest Ship Image
Mancini, Carolina	Scanno	1906	38	Passenger Record Text Manifest	Scanned Manifest Ship Image
Mancini, Celestino	Scanno, Italy	1922	23	Passenger Record Text Manifest	Scanned Manifest Ship Image
Mancini, Clemente *	Scanno	1905	42	Passenger Record Text Manifest	Scanned Manifest Ship Image
Mancurri, Clennite	Scanno	1905	42	Passenger Record Text Manifest	Scanned Manifest Ship Image
Mancini, Domenicantonio	Scanno, Aquila	1913	21	Passenger Record Text Manifest	Scanned Manifest Ship Image
Mancini, Domenico	Scanno, Italy	1920	27	Passenger Record Text Manifest	Scanned Manifest Ship Image
Mancini, Ernesto	Scanno, Italy	1907	31	Passenger Record Text Manifest	Scanned Manifest Ship Image
Mancini, Ernesto	Scanno	1899	23	Passenger Record Text Manifest	Scanned Manifest Ship Image
Mancini, Giuseppe *	Scanno, Italy	1912	13	Passenger Record Text Manifest	Scanned Manifest Ship Image
Mancini, Gregorio	Scanno, Aquila, Italy	1920	31	Passenger Record Text Manifest	Scanned Manifest Ship Image
Mancini, Luigi	Scanno, Aquila	1907	18	Passenger Record Text Manifest	Scanned Manifest Ship Image

Da Mancini Michelangelo a Mastrodomenico Allesto (?)

Mancini, Michelangelo	Scanno	1906	14	Passenger Record Text Manifest	Scanned Manifest Ship Image
Mancini, Nunzia	Scanno, Italy	1912	47	Passenger Record Text Manifest	Scanned Manifest Ship Image
Mancini, Pasquale Antonio	Scanno	1906	22	Passenger Record Text Manifest	Scanned Manifest Ship Image
Mancini, Pasqualina	Scanno, Italy	1920	25	Passenger Record Text Manifest	Scanned Manifest Ship Image
Mancini, Pietro	Scanno	1904	38	Passenger Record Text Manifest	Scanned Manifest Ship Image
Mancini, Pla Antonio	Scanno	1901	17	Passenger Record Text Manifest	Scanned Manifest Ship Image
Mancini, Quintiliano	Scanno, Italy	1910	17	Passenger Record Text Manifest	Scanned Manifest Ship Image
Mancini, Rodolfo	Scanno, Aquila	1912	18	Passenger Record Text Manifest	Scanned Manifest Ship Image
Mangmelli, Egidio * (Gidio)	Scanno	1893	42	Passenger Record Text Manifest	Scanned Manifest Ship Image
Manzill, Lucia(?)					
Mancini?, Lucia					
Mother named Mary Uncle in Boston Liborio Tarullo	Scanno, Italy	1921	21	Passenger Record Text Manifest	Scanned Manifest Ship Image
Marice, Cosenta	Scanno, Italy	1904	48	Passenger Record Text Manifest	Scanned Manifest Ship Image
Marinni, Alberto	Scanno, Aquila, It.	1909	25	Passenger Record Text Manifest	Scanned Manifest Ship Image
Martorella, Angelo	Scanno	1900	37	Passenger Record Text Manifest	Scanned Manifest Ship Image
Martorella, Domenico	Scanno	1905	24	Passenger Record Text Manifest	Scanned Manifest Ship Image
Martorelli, Silvio	Scanno	1905	38	Passenger Record Text Manifest	Scanned Manifest Ship Image
Martorello, Severino * Martocello, Severino	Scanno	1903	35	Passenger Record Text Manifest	Scanned Manifest Ship Image
Martorello, Silvio	Scanno, Aquila (Aquila)	1912	43	Passenger Record Text Manifest	Scanned Manifest Ship Image
Massa, Polisena	Scanno	1901	14	Passenger Record Text Manifest	Scanned Manifest Ship Image
Massari, Raffaele	Scanno, Italy	1913	31	Passenger Record Text Manifest	Scanned Manifest Ship Image
Massaro, Cristofaro	Scanno	1901	28	Passenger Record Text Manifest	Scanned Manifest Ship Image
Massaro, Francesco	Scanno	1902	37	Passenger Record Text Manifest	Scanned Manifest Ship Image
Mastrodomenico, Allesto	Scanno	1900	33	Passenger Record Text Manifest	Scanned Manifest Ship Image

Da Mastroduoso Rocco a Novelli Annibele

Mastroduoso, Rocco	Scanno Aquila (Aquila)	1910	26	Passenger Record Text Manifest	Scanned Manifest Ship Image
Mastrogiovanni, Aniceto	Scanno, Italy	1907	22	Passenger Record Text Manifest	Scanned Manifest Ship Image
Mastrogiovanni, Maria	Scanno, Italy	1920	73	Passenger Record Text Manifest	Scanned Manifest Ship Image
Matia, Giandonato	Scanno, Italy	1910	36	Passenger Record Text Manifest	Scanned Manifest Ship Image
Mortarello, Michele	Scanno, Aquila	1910	23	Passenger Record Text Manifest	Scanned Manifest Ship Image
Mortorelli, Michele	Scanno	1905	18	Passenger Record Text Manifest	Scanned Manifest Ship Image
Nannarone, Bernardo	Scanno, Italy	1913	42	Passenger Record Text Manifest	Scanned Manifest Ship Image
Nannarone, Bernardo	Scanno	1901	30	Passenger Record Text Manifest	Scanned Manifest Ship Image
Nannarone, Costanzo	Scanno, Aquila, It.	1909	31	Passenger Record Text Manifest	Scanned Manifest Ship Image
Nannarone, Eustacchio	Scanno, Italy	1920	23	Passenger Record Text Manifest	Scanned Manifest Ship Image
Nannarone, Gaetano	Scanno, Italy	1912	19	Passenger Record Text Manifest	Scanned Manifest Ship Image
Nannarone, Giuseppe	Scanno, Aquila (Aquila)	1909	35	Passenger Record Text Manifest	Scanned Manifest Ship Image
Nannarone, Ilario	Scanno, Italy	1920	23	Passenger Record Text Manifest	Scanned Manifest Ship Image
Nannarone, Nunzio	Scanno, Italy	1920	31	Passenger Record Text Manifest	Scanned Manifest Ship Image
Nannarone, Paolo	Scanno	1902	32	Passenger Record Text Manifest	Scanned Manifest Ship Image
Nardille, Gaetano	Scanno	1899	35	Passenger Record Text Manifest	Scanned Manifest Ship Image
Nardilli, Anna	Scanno, Italy	1912	14	Passenger Record Text Manifest	Scanned Manifest Ship Image
Nardilli, Giulia	Scanno, Italy	1912	17	Passenger Record Text Manifest	Scanned Manifest Ship Image
Nardilli, Maria Grazia	Scanno, Aquila	1913	22	Passenger Record Text Manifest	Scanned Manifest Ship Image
Nini, Filomena	Scanno,	1904	31	Passenger Record Text Manifest	Scanned Manifest Ship Image
Nocente, Francesco	Scanno	1900	26	Passenger Record Text Manifest	Scanned Manifest Ship Image
Nocente, Nazzareno	Scanno, Aquila	1920	39	Passenger Record Text Manifest	Scanned Manifest Ship Image
Nocente, Rocco	Scanno, Aquila	1912	0	Passenger Record Text Manifest	Scanned Manifest Ship Image
Nocente, Rocco	Scanno (Aginta)	1910	38	Passenger Record Text Manifest	Scanned Manifest Ship Image
Nocente (Vociante) Rocco * Nocente (Vocento), Rosario fu Orazio *	Scanno	1899	28	Passenger Record Text Manifest	Scanned Manifest Ship Image
		1900	36	Passenger Record Text Manifest	Scanned Manifest Ship Image
Nocente, Rosario	Scanno, Italy	1907	43	Passenger Record Text Manifest	Scanned Manifest Ship Image
Nocente, Salvatore	Scanno	1905	36	Passenger Record Text Manifest	Scanned Manifest Ship Image
Nocenti, Nicola	Scanno, Aquila	1907	41	Passenger Record Text Manifest	Scanned Manifest Ship Image
Nocento, Nazzareno	Scanno, Italy	1913	33	Passenger Record Text Manifest	Scanned Manifest Ship Image
Nolfi, Angelo	Scanno, Italy	1923	24	Passenger Record Text Manifest	Scanned Manifest Ship Image
Nordilli, Gaetano	Scanno	1905	42	Passenger Record Text Manifest	Scanned Manifest Ship Image
Norzi, Cosmo	Scanno	1901	36	Passenger Record Text Manifest	Scanned Manifest Ship Image
Notarmuzzi, Giuseppe	Scanno	1899	33	Passenger Record Text Manifest	Scanned Manifest Ship Image
Novelli, Annibele	Scanno, Italy	1914	29	Passenger Record Text Manifest	Scanned Manifest Ship Image

Da Oriola Angelo Nazzarino a Paletta Nunzia

Oriola, Angelo Nazzarino	Scanno, Aquila	1913	17	Passenger Record Text Manifest Scanned Manifest Ship Image
P...lo, Liboris	Scanno	1899	34	Passenger Record Text Manifest Scanned Manifest Ship Image
Pace, Angela	Scanno	1892	3	Passenger Record Text Manifest Scanned Manifest Ship Image
Pace, Francesco	Scanno	1899	23	Passenger Record Text Manifest Scanned Manifest Ship Image
Pace, Severina	Scanno	1892	35	Passenger Record Text Manifest Scanned Manifest Ship Image
Pacentrilli, Marino	Scanno, Italy	1920	16	Passenger Record Text Manifest Scanned Manifest Ship Image
Pacentrilli, Massimino	Scanno, Italy	1913	16	Passenger Record Text Manifest Scanned Manifest Ship Image
Pacentrillo, Giuseppe	Scanno	1900	30	Passenger Record Text Manifest Scanned Manifest Ship Image
Pagliari, Alfeco	Scanno	1904	23	Passenger Record Text Manifest Scanned Manifest Ship Image
Pagliari, Giovanni *	Scanno	1903	14	Passenger Record Text Manifest Scanned Manifest Ship Image
Pagliari, Giovanni	Scanno	1907	17	Passenger Record Text Manifest Scanned Manifest Ship Image
Pagliari, Lucia	Scanno	1905	0	Passenger Record Text Manifest Scanned Manifest Ship Image
Pagliari, Mario	Scanno	1904	30	Passenger Record Text Manifest Scanned Manifest Ship Image
Pagliari, Raffaele *	Scanno	1903	16	Passenger Record Text Manifest Scanned Manifest Ship Image
Pagliari, Raffaele	Scanno, Italy	1920	32	Passenger Record Text Manifest Scanned Manifest Ship Image
Paletta, Antonino	Scanno, Italy	1920	28	Passenger Record Text Manifest Scanned Manifest Ship Image
Paletta, Attilio *	Scanno	1902	19	Passenger Record Text Manifest Scanned Manifest Ship Image
Paoletta, Attilio	Scanno	1902	54	Passenger Record Text Manifest Scanned Manifest Ship Image
Paletta, Carmela *	Scanno	1910	19	Passenger Record Text Manifest Scanned Manifest Ship Image
Paletta, Carmela	Scanno, Italy	1920	42	Passenger Record Text Manifest Scanned Manifest Ship Image
Paletta, Carmelo *	Scanno, Italy	1914	24	Passenger Record Text Manifest Scanned Manifest Ship Image
Paletta, Carmelo	Scanno, Italy	1914	23	Passenger Record Text Manifest Scanned Manifest Ship Image
Paletta, Eliodoro	Scanno, Italy	1911	26	Passenger Record Text Manifest Scanned Manifest Ship Image
Paletta, Francesco	Scanno, Italy	1914	24	Passenger Record Text Manifest Scanned Manifest Ship Image
Paletta, Guiseppe	Scanno, Italy	1911	26	Passenger Record Text Manifest Scanned Manifest Ship Image
Paletta, Guiseppe	Scanno, Italy	1911	26	Passenger Record Text Manifest Scanned Manifest Ship Image
Paletta, Maddalena *	Scanno, Aquila	1912	25	Passenger Record Text Manifest Scanned Manifest Ship Image
m. Pasquale Fusco Monark /Monarch Mine area (Cameyville), WY	(Aquila)	1912	25	Passenger Record Text Manifest Scanned Manifest Ship Image
Paletta, Maria	Scanno	1904	25	Passenger Record Text Manifest Scanned Manifest Ship Image
Paletta, Maria Adele *	Scanno	1904	2	Passenger Record Text Manifest Scanned Manifest Ship Image
Paletta, Nunzia	Scanno, Italy	1920	32	Passenger Record Text Manifest Scanned Manifest Ship Image

Da Paletta Pasquale a Pallozza Raffaele

Paletta, Pasquale	Scanno, Aquila	1910	24	Passenger Record Text Manifest Scanned Manifest Ship Image
Paletta, Pietro (Palletta, Pietro)	Scanno	1903	27	Passenger Record Text Manifest Scanned Manifest Ship Image
Paletta, Roberto	Scanno, Italy	1923	35	Passenger Record Text Manifest Scanned Manifest Ship Image
Paletta, Rosato	Scanno	1907	28	Passenger Record Text Manifest Scanned Manifest Ship Image
Paletta, Rosato	Scanno	1907	48	Passenger Record Text Manifest Scanned Manifest Ship Image
Paletta, Vincenzo *	Scanno	1904	5	Passenger Record Text Manifest Scanned Manifest Ship Image
Pallozza, Concezio *	Scanno, Aquila (Aquila)	1911	25	Passenger Record Text Manifest Scanned Manifest Ship Image
Pallozza, Maria	Scanno	1906	33	Passenger Record Text Manifest Scanned Manifest Ship Image
Pallozza, Nicano	Scanno, Italy	1913	50	Passenger Record Text Manifest Scanned Manifest Ship Image
Pallozza, Raffaele	Scanno, Italy	1913	23	Passenger Record Text Manifest Scanned Manifest Ship Image

Da Pallozza Salvatore a Pisciotti Cesari

Pallozza, Salvatore *	Scanno, Aquila (Aquila)	1911	17	Passenger Record Text Manifest	Scanned Manifest Ship Image
Paolone, Orazio *	Scanno, Aquila	1907	24	Passenger Record Text Manifest	Scanned Manifest Ship Image
Pantalone, Orazio	Scanno, Italy	1912	29	Passenger Record Text Manifest	Scanned Manifest Ship Image
Paulone, Federico	Scanno	1903	17	Passenger Record Text Manifest	Scanned Manifest Ship Image
Paulone, Federico *	Scanno, Aquila	1913	27	Passenger Record Text Manifest	Scanned Manifest Ship Image
Paulone, Federico	Scanno, Italy	1922	25	Passenger Record Text Manifest	Scanned Manifest Ship Image
Paulone, Felice	Scanno	1893	30	Passenger Record Text Manifest	Scanned Manifest Ship Image
Paulone, Gennaro *	Scanno	1905	42	Passenger Record Text Manifest	Scanned Manifest Ship Image
Paulone, Gennaro died in hospital	Scanno, Aquila	1910	16	Passenger Record Text Manifest	Scanned Manifest Ship Image
Paulone, Giuseppe *	Scanno, Italy	1920	25	Passenger Record Text Manifest	Scanned Manifest Ship Image
Paulone, Giuseppe	Scanno, Italy	1913	17	Passenger Record Text Manifest	Scanned Manifest Ship Image
Paulone, Mario *	Scanno, Italy	1913	27	Passenger Record Text Manifest	Scanned Manifest Ship Image
Paulone, Pietro *	Scanno, Italy	1913	17	Passenger Record Text Manifest	Scanned Manifest Ship Image
Paulone, Pietro	Scanno, Italy	1914	25	Passenger Record Text Manifest	Scanned Manifest Ship Image
Paulone, Vito Antonio	Scanno	1905	21	Passenger Record Text Manifest	Scanned Manifest Ship Image
Pazzo, Casinciro	Scanno, Italy	1913	23	Passenger Record Text Manifest	Scanned Manifest Ship Image
Peluso, Antonio	Scanno	1899	26	Passenger Record Text Manifest	Scanned Manifest Ship Image
Peluso, Antonio *	Scanno	1905	33	Passenger Record Text Manifest	Scanned Manifest Ship Image
Peluso, Antonio	Scanno	1899	21	Passenger Record Text Manifest	Scanned Manifest Ship Image
Petrocco(Pietr....) Domenico	Scanno, Italy	1913	22	Passenger Record Text Manifest	Scanned Manifest Ship Image
Petrocco(Petroccio), Domenico	Scanno	1905	30	Passenger Record Text Manifest	Scanned Manifest Ship Image
Petrocco, Egidio	Scanno, Italy	1913	25	Passenger Record Text Manifest	Scanned Manifest Ship Image
Petrocco, G.... *	Scanno	1910	20	Passenger Record Text Manifest	Scanned Manifest Ship Image
Gandentic, Petracco to Waltham, Mass wife Maria	Scanno	1910	26	Passenger Record Text Manifest	Scanned Manifest Ship Image
Petrocco, Liberata	Scanno	1905	39	Passenger Record Text Manifest	Scanned Manifest Ship Image
Petrocco, Lucia	Scanno, Italy	1913	19	Passenger Record Text Manifest	Scanned Manifest Ship Image
Pilla, Domenica	Scanno, Italy	1910	20	Passenger Record Text Manifest	Scanned Manifest Ship Image
Pilla, Francesco	Scanno, Italy	1910	26	Passenger Record Text Manifest	Scanned Manifest Ship Image
Piozzi, Cosmo	Scanno	1905	39	Passenger Record Text Manifest	Scanned Manifest Ship Image
Pisciotti, Cesari	Scanno, Italy	1913	19	Passenger Record Text Manifest	Scanned Manifest Ship Image

Da Pisciotti Florindo a Prozzi Eustachio

Pisciotti, Florindo *	Scanno	1899	31	Passenger Record Text Manifest	Scanned Manifest Ship Image
Piscocotti, Flomido	Scanno, Italy	1924	26	Passenger Record Text Manifest	Scanned Manifest Ship Image
Pisciotti, Nunziato	Scanno, Aquila	1911	18	Passenger Record Text Manifest	Scanned Manifest Ship Image
Pisciotti, Pasquale *	Scanno	1905	30	Passenger Record Text Manifest	Scanned Manifest Ship Image
Pisciotta, Pasquale	Scanno	1910	21	Passenger Record Text Manifest	Scanned Manifest Ship Image
Pisciotti, Sabino	Scanno, Italy	1922	33	Passenger Record Text Manifest	Scanned Manifest Ship Image
Pisciotti, Saliero	Scanno, Italy	1920	28	Passenger Record Text Manifest	Scanned Manifest Ship Image
Pisciotti, Saliero	Scanno	1905	56	Passenger Record Text Manifest	Scanned Manifest Ship Image
Piscitelli, Ettore	Scanno, Italy	1910	20	Passenger Record Text Manifest	Scanned Manifest Ship Image
Piscitelli, Filomena	Scanno, Italy	1924	3	Passenger Record Text Manifest	Scanned Manifest Ship Image
Piscitelli, Giuseppe *	Scanno	1901	33	Passenger Record Text Manifest	Scanned Manifest Ship Image
Piscatelli, Guiseppe	Scanno, Italy	1911	19	Passenger Record Text Manifest	Scanned Manifest Ship Image
Piscitelli, Giuseppe	Scanno	1907	38	Passenger Record Text Manifest	Scanned Manifest Ship Image
Piscitelli, Orazio *	Scanno, Italy	1920	30	Passenger Record Text Manifest	Scanned Manifest Ship Image
Piscitelli, Orazio	Scanno, Italy	1913	26	Passenger Record Text Manifest	Scanned Manifest Ship Image
Piscitelli, Pasqualantonio	Scanno	1905	36	Passenger Record Text Manifest	Scanned Manifest Ship Image
Pizzacalla, Basilio	Scanno	1903	38	Passenger Record Text Manifest	Scanned Manifest Ship Image
Pizzacalla, Francesco *	Scanno	1905	36	Passenger Record Text Manifest	Scanned Manifest Ship Image
Pizzucalla, Francesco	Scanno	1903	38	Passenger Record Text Manifest	Scanned Manifest Ship Image
Prozzi, Eustachio	Scanno	1903	38	Passenger Record Text Manifest	Scanned Manifest Ship Image

Da Pugliatti (?) Vincenzo a Quaglione Giuseppe

Pugliatti, Vincenzo	Scanno	1905	17	Passenger Record	Text Manifest	Scanned Manifest	Ship Image
Quaglione, Cesidio	Scanno (Scarino)	1907	35	Passenger Record	Text Manifest	Scanned Manifest	Ship Image
Quaglione, Cesidio	Scanno	1899	22	Passenger Record	Text Manifest	Scanned Manifest	Ship Image
Quaglione, Cesidio	Scanno	1903	32	Passenger Record	Text Manifest	Scanned Manifest	Ship Image
Quaglione, Eustachio	Scanno	1903	29	Passenger Record	Text Manifest	Scanned Manifest	Ship Image
Quaglione, Eustachio *	Scanno, Aquila	1910	36	Passenger Record	Text Manifest	Scanned Manifest	Ship Image
Quaglione, Giovanni (Giovanni, Anaglione)	Scanno	1905	28	Passenger Record	Text Manifest	Scanned Manifest	Ship Image
Quaglione, Giuseppe	Scanno	1901	23	Passenger Record	Text Manifest	Scanned Manifest	Ship Image
Quaglione, Giuseppe (Giuseppe, Anaglione)	Scanno	1905	36	Passenger Record	Text Manifest	Scanned Manifest	Ship Image

Da Recotta Egidio (Ricotta Egidio?) a Romito Pasquale Antonio

Recotta, Egidio	Scanno, Italy	1924	34	Passenger Record	Text Manifest	Scanned Manifest	Ship Image
Retolo, Liboria *	Scanno	1906	31	Passenger Record	Text Manifest	Scanned Manifest	Ship Image
Ricci, Concezio	Scanno	1903	15	Passenger Record	Text Manifest	Scanned Manifest	Ship Image
Ricotta, Francesco	Scanno	1899	15	Passenger Record	Text Manifest	Scanned Manifest	Ship Image
Ricotta, Nicolantonio	Scanno	1905	24	Passenger Record	Text Manifest	Scanned Manifest	Ship Image
Romanelli, Attilio	Scanno	1901	17	Passenger Record	Text Manifest	Scanned Manifest	Ship Image
Romito, Antonio	Scanno, Italy	1920	12	Passenger Record	Text Manifest	Scanned Manifest	Ship Image
Romito, Donato	Scanno, Italy	1920	39	Passenger Record	Text Manifest	Scanned Manifest	Ship Image
Romito, Erlno	Scanno, Italy	1920	41	Passenger Record	Text Manifest	Scanned Manifest	Ship Image
Romito, Giuseppe	Scanno	1907	18	Passenger Record	Text Manifest	Scanned Manifest	Ship Image
Romito, Giuseppe *	Scanno, Italy	1922	33	Passenger Record	Text Manifest	Scanned Manifest	Ship Image
Caretti, Giuseppe	Scanno, Italy	1922	33	Passenger Record	Text Manifest	Scanned Manifest	Ship Image
Romito, Pasquale	Scanno	1900	25	Passenger Record	Text Manifest	Scanned Manifest	Ship Image
Romito, Pasquale Anto.	Scanno, Aquila	1911	23	Passenger Record	Text Manifest	Scanned Manifest	Ship Image

Da Romito Salvatore a Rozzi Riccardo

Romito, Salvatore	Scanno	1899	24	Passenger Record	Text Manifest	Scanned Manifest	Ship Image
Ronchetti, Laurs	Scanno	1900	17	Passenger Record	Text Manifest	Scanned Manifest	Ship Image
Roncone, Francesco	Scanno	1906	23	Passenger Record	Text Manifest	Scanned Manifest	Ship Image
Rosale, Francesco	Scanno	1899	21	Passenger Record	Text Manifest	Scanned Manifest	Ship Image
Rosati, Antonio	Scanno, Italy	1924	10	Passenger Record	Text Manifest	Scanned Manifest	Ship Image
Rosati, Benedetto	Scanno	1903	29	Passenger Record	Text Manifest	Scanned Manifest	Ship Image
Rosati, Cesidio	Scanno, Italy	1913	26	Passenger Record	Text Manifest	Scanned Manifest	Ship Image
Rosati, Cesidio * (Cesifio)	Scanno, Italy	1920	33	Passenger Record	Text Manifest	Scanned Manifest	Ship Image
Rosati, Esterina	Scanno, Italy	1924	35	Passenger Record	Text Manifest	Scanned Manifest	Ship Image
Rosati, Eustachio	Scanno, Italy	1924	3	Passenger Record	Text Manifest	Scanned Manifest	Ship Image
Rossicone, Angelo	Scanno, Italy	1910	25	Passenger Record	Text Manifest	Scanned Manifest	Ship Image
Rossicone, Carmelo	Scanno	1905	27	Passenger Record	Text Manifest	Scanned Manifest	Ship Image
Rossicone, Carmelo	Scanno, Italy	1924	22	Passenger Record	Text Manifest	Scanned Manifest	Ship Image
Rossicone, Costantino *	Scanno	1907	19		* Text Manifest		
Rossicone, Costantino *	Scanno, Aquila	1912	24	Passenger Record	Text Manifest	Scanned Manifest	Ship Image
Rossicone, Quirino * ?	Scanno, Italy	1920	28	Passenger Record	Text Manifest	Scanned Manifest	Ship Image
Rossicone, Gaetano *	Scanno	1906	43	Passenger Record	Text Manifest	Scanned Manifest	Ship Image
Rostrone, Gaetano	to Monark, WY						
Rossicone, Quirino *	Scanno	1906	15	Passenger Record	Text Manifest	Scanned Manifest	Ship Image
Rostrone, Quirino	to Monark, WY						
Rotoio, Anzelis	Scanno, Italy	1912	17	Passenger Record	Text Manifest	Scanned Manifest	Ship Image
Rotoio, Fabiano	Scanno, Italy	1913	17	Passenger Record	Text Manifest	Scanned Manifest	Ship Image
Rotoio, Filomena	Scanno, Italy	1924	25	Passenger Record	Text Manifest	Scanned Manifest	Ship Image
Rotolo, Giustino	Scanno, Italy	1920	20	Passenger Record	Text Manifest	Scanned Manifest	Ship Image
Rotolo, Lilia	Scanno, Italy	1924	2	Passenger Record	Text Manifest	Scanned Manifest	Ship Image
Rotolo, Luigi	Scanno, Italy	1912	19	Passenger Record	Text Manifest	Scanned Manifest	Ship Image
Rotolo, Michele	Scanno, Aquila	1921	26	Passenger Record	Text Manifest	Scanned Manifest	Ship Image
Rotolo, Michele	Scanno, Italy	1913	19	Passenger Record	Text Manifest	Scanned Manifest	Ship Image
Rotolo, Ottavio	Scanno, Aquila	1910	24	Passenger Record	Text Manifest	Scanned Manifest	Ship Image
Rotolo, Remo	Scanno, Italy	1923	24	Passenger Record	Text Manifest	Scanned Manifest	Ship Image
Rozzi, Adamo	Scanno	1900	26	Passenger Record	Text Manifest	Scanned Manifest	Ship Image
Rozzi, Alfredo	Scanno, Italy	1914	28	Passenger Record	Text Manifest	Scanned Manifest	Ship Image
Rozzi, Amico	Scanno, Italy	1920	44	Passenger Record	Text Manifest	Scanned Manifest	Ship Image
Rozzi, Cosimo*	Scanno	1905	39	Passenger Record	Text Manifest	Scanned Manifest	Ship Image
Plozzi, Cosmo	Scanno	1905	39	Passenger Record	Text Manifest	Scanned Manifest	Ship Image
Rozzi, Domenico	Scanno	1904	32	Passenger Record	Text Manifest	Scanned Manifest	Ship Image
Rozzi, Eustacchio *	Scanno	1903	38	Passenger Record	Text Manifest	Scanned Manifest	Ship Image
Prozzi, Eustacchio	Scanno	1903	38	Passenger Record	Text Manifest	Scanned Manifest	Ship Image
Gilberto, Rozzi	Scanno	1902	33	Passenger Record	Text Manifest	Scanned Manifest	Ship Image
Rozzi, Gilberto *	Scanno	1902	33	Passenger Record	Text Manifest	Scanned Manifest	Ship Image
Rozzi, Loreto	Scanno	1900	25	Passenger Record	Text Manifest	Scanned Manifest	Ship Image
Rozzi, Matteo	Scanno	1902	20	Passenger Record	Text Manifest	Scanned Manifest	Ship Image
Rozzi, Nicola	Scanno	1900	36	Passenger Record	Text Manifest	Scanned Manifest	Ship Image
Rozzi, Riccardo	Scanno	1903	24	Passenger Record	Text Manifest	Scanned Manifest	Ship Image

Da Laporta Nunzio a Sarra Emidio

Laporta?	Scanno	1901	37	Passenger Record	Text Manifest	Scanned Manifest	Ship Image
Sa Parra, Nunzio	Scanno, Aquila	1908	10	Passenger Record	Text Manifest	Scanned Manifest	Ship Image
Tarullo, Antonio *	Scanno	1903	18	Passenger Record	Text Manifest	Scanned Manifest	Ship Image
San Carlo, Antonio	Scanno, Italy	1910	20	Passenger Record	Text Manifest	Scanned Manifest	Ship Image
Santilli, Cristofaro	Scanno, Italy	1913	30	Passenger Record	Text Manifest	Scanned Manifest	Ship Image
Santilli, Cristofaro	Scanno	1903	24	Passenger Record	Text Manifest	Scanned Manifest	Ship Image
Santillo, Cristofaro	Scanno	1905	26	Passenger Record	Text Manifest	Scanned Manifest	Ship Image
Santilli, Giuseppe *	Scanno	1906	18	Passenger Record	Text Manifest	Scanned Manifest	Ship Image
Giuseppe, Santilli	Scanno, Aquila	1909	23	Passenger Record	Text Manifest	Scanned Manifest	Ship Image
Santilli, Nicola	Scanno, Aquila	1907	18	Passenger Record	Text Manifest	Scanned Manifest	Ship Image
Santilli, Paolo *	Scanno	1903	20	Passenger Record	Text Manifest	Scanned Manifest	Ship Image
Lantilli, Paolo	Scanno	1905	22	Passenger Record	Text Manifest	Scanned Manifest	Ship Image
Santucci, Angelo	Scanno, Italy	1920	31	Passenger Record	Text Manifest	Scanned Manifest	Ship Image
Santucci, Angelo	Scanno, Aquila	1907	17	Passenger Record	Text Manifest	Scanned Manifest	Ship Image
Santucci, Angelo	SCANNO	1905	16	Passenger Record	Text Manifest	Scanned Manifest	Ship Image
Santucci, Concezio	Scanno	1906	31	Passenger Record	Text Manifest	Scanned Manifest	Ship Image
Santucci, Filomena	Scanno, Italy	1924	35	Passenger Record	Text Manifest	Scanned Manifest	Ship Image
Santucci, Giuseppe	Scanno, Aquila	1912	23	Passenger Record	Text Manifest	Scanned Manifest	Ship Image
Santucci, Lucia *	Scanno, Aquila	1910	1	Passenger Record	Text Manifest	Scanned Manifest	Ship Image
Santrucci, Lucia	Scanno	1906	21	Passenger Record	Text Manifest	Scanned Manifest	Ship Image
Santucci, Marliano	Scanno, Aquila	1909	24	Passenger Record	Text Manifest	Scanned Manifest	Ship Image
Santucci, Marliano *	Scanno, Italy	1911	48	Passenger Record	Text Manifest	Scanned Manifest	Ship Image
Santucci, Michele	Scanno, Italy	1910	20	Passenger Record	Text Manifest	Scanned Manifest	Ship Image
Santucci, Pasqualeantonio	Scanno	1900	36	Passenger Record	Text Manifest	Scanned Manifest	Ship Image
Santucci, Pasquale	Scanno, Aquila	1910	5	Passenger Record	Text Manifest	Scanned Manifest	Ship Image
Santucci, Quirino	Scanno, Aquila	1909	17	Passenger Record	Text Manifest	Scanned Manifest	Ship Image
Santucci, Secondino	Scanno, Italy	1913	14	Passenger Record	Text Manifest	Scanned Manifest	Ship Image
Sarra, Alcamio *	Scanno	1903	16	Passenger Record	Text Manifest	Scanned Manifest	Ship Image
Sarra, Aleggino							
Sarra, Emidio							
arrived with Severino Martorello to stay with Angelo Martorello, Mulberry St, NY	Scanno	1903	16	Passenger Record	Text Manifest	Scanned Manifest	Ship Image

Da Sarra Giuseppe a Silla Egidio

Sarra, Giuseppe	Scanno, Italy	1913	37	Passenger Record	Text Manifest	Scanned Manifest	Ship Image
Sarra, Pasquale	Scanno	1903	20	Passenger Record	Text Manifest	Scanned Manifest	Ship Image
Schiappa, Angelo *	Scanno	1893	28	Passenger Record	Text Manifest	Scanned Manifest	Ship Image
Sillo, appa, Angelo	Scanno, Aquila	1907	16	Passenger Record	Text Manifest	Scanned Manifest	Ship Image
Schiappa, Antonio	Scanno	1900	29	Passenger Record	Text Manifest	Scanned Manifest	Ship Image
Schiappa, Aqere wife of Cesidio	Scanno	1896	26	Passenger Record	Text Manifest	Scanned Manifest	Ship Image
Schiappa, Cesidio *	Scanno	1900	5	Passenger Record	Text Manifest	Scanned Manifest	Ship Image
Schioppa, Cisdio	Scanno, Italy	1920	20	Passenger Record	Text Manifest	Scanned Manifest	Ship Image
Schiappa, Eustachio	Scanno	1896	27	Passenger Record	Text Manifest	Scanned Manifest	Ship Image
Schiappa, Giuseppe	Scanno, Italy	1920	53	Passenger Record	Text Manifest	Scanned Manifest	Ship Image
Schiappa, Luigi *	Scanno	1905	38	Passenger Record	Text Manifest	Scanned Manifest	Ship Image
Schioppa, Luigi	Scanno, Aquila	1909	42	Passenger Record	Text Manifest	Scanned Manifest	Ship Image
Sclaretta, Egidio	Scanno	1899	40	Passenger Record	Text Manifest	Scanned Manifest	Ship Image
Sclaretta, Egidio	Scanno, Italy	1920	60	Passenger Record	Text Manifest	Scanned Manifest	Ship Image
Sclaretta, Egidio	Scanno	1905	45	Passenger Record	Text Manifest	Scanned Manifest	Ship Image
Sclaretta, Pasquale	Scanno, Italy	1910	21	Passenger Record	Text Manifest	Scanned Manifest	Ship Image
Sclaretta, Pasquale Anton.	Scanno, Italy	1919	30	Passenger Record	Text Manifest	Scanned Manifest	Ship Image
Silla (Sella), Caselano	Scanno, Aquila	1912	18	Passenger Record	Text Manifest	Scanned Manifest	Ship Image
Sella, (Silla) Giuseppe	Scanno	1905	21	Passenger Record	Text Manifest	Scanned Manifest	Ship Image
Serafini, Angelo	Scanno, Italy	1913	24	Passenger Record	Text Manifest	Scanned Manifest	Ship Image
Serafini, Angelo	Scanno, Italy	1924	35	Passenger Record	Text Manifest	Scanned Manifest	Ship Image
Serafini, Giovanni	Scanno, Aquila	1912	16	Passenger Record	Text Manifest	Scanned Manifest	Ship Image
Serafini, Lauro	Scanno, Italy	1912	18	Passenger Record	Text Manifest	Scanned Manifest	Ship Image
Serafini, Vincenzo	Scanno	1900	21	Passenger Record	Text Manifest	Scanned Manifest	Ship Image
Sero, Carmelo	Scanno, Italy	1920	17	Passenger Record	Text Manifest	Scanned Manifest	Ship Image
Sero, Cesidio *	Scanno	1899	33	Passenger Record	Text Manifest	Scanned Manifest	Ship Image
Sero, Cesidio	Scanno	1905	45	Passenger Record	Text Manifest	Scanned Manifest	Ship Image
Sero, Domenico	Scanno, Italy	1916	56	Passenger Record	Text Manifest	Scanned Manifest	Ship Image
Sero, Domenico	Scanno, Italy	1912	13	Passenger Record	Text Manifest	Scanned Manifest	Ship Image
Sero, Gottore	Scanno, Aquila (also US)	1908	24	Passenger Record	Text Manifest	Scanned Manifest	Ship Image
Silla, Aniceto	Scanno	1905	21	Passenger Record	Text Manifest	Scanned Manifest	Ship Image
Silla, Bernardo	Scanno, Italy	1910	41	Passenger Record	Text Manifest	Scanned Manifest	Ship Image
Silla, Bernardo	Scanno	1901	33	Passenger Record	Text Manifest	Scanned Manifest	Ship Image
Silla, Concezio	Scanno, Italy	1920	20	Passenger Record	Text Manifest	Scanned Manifest	Ship Image
Silla, Donato	Scanno, Aquila	1910	26	Passenger Record	Text Manifest	Scanned Manifest	Ship Image
Silla, Eduardo *	Scanno, Aquila	1910	34	Passenger Record	Text Manifest	Scanned Manifest	Ship Image
Silla, Eduardo	Scanno, Italy	1907	32	Passenger Record	Text Manifest	Scanned Manifest	Ship Image
Silla, Egidio	Scanno	1902	27	Passenger Record	Text Manifest	Scanned Manifest	Ship Image

Da Silla Emilio a Silla Leonardo

Silla, Emilio	Scanno, Italy	1913	27	Passenger Record	Text Manifest	Scanned Manifest	Ship Image
Silla, Eustachio	Scanno	1910	17	Passenger Record	Text Manifest	Scanned Manifest	Ship Image
Silla, Eustachio	Scanno, Italy	1924	27	Passenger Record	Text Manifest	Scanned Manifest	Ship Image
Silla, Eustachio	Scanno, Italy	1923	30	Passenger Record	Text Manifest	Scanned Manifest	Ship Image
Silla, Giovanni	Scanno	1905	27	Passenger Record	Text Manifest	Scanned Manifest	Ship Image
Silla, Giuseppe *	Scanno	1905	30	Passenger Record	Text Manifest	Scanned Manifest	Ship Image
Guiseppe, Sillo *	Scanno (Scarino)	1907	32	Passenger Record	Text Manifest	Scanned Manifest	Ship Image
Silla, Giuseppe *	Scanno	1920	32	Passenger Record	Text Manifest	Scanned Manifest	Ship Image
Solla, Giuseppe *	Scanno	1913	25	Passenger Record	Text Manifest	Scanned Manifest	Ship Image
Silla, Giuseppe	Scanno(Scarino)	1907	39	Passenger Record	Text Manifest	Scanned Manifest	Ship Image
Silla, Giuseppe *	Scanno	1902	31	Passenger Record	Text Manifest	Scanned Manifest	Ship Image
Silla, Leonardo	Scanno, Italy	1914	42	Passenger Record	Text Manifest	Scanned Manifest	Ship Image
Solla, Leonardo							

Da Silla Luciano a Di Stisio Maria Orazia

Silla, Luciano	Scanno	1905	33	Passenger Record	Text Manifest	Scanned Manifest	Ship Image
Silla, Luciano	Scanno	1902	31	Passenger Record	Text Manifest	Scanned Manifest	Ship Image
Silla, Lucio	Scanno	1901	21	Passenger Record	Text Manifest	Scanned Manifest	Ship Image
Silla, Marino *	Scanno, Italy	1914	38	Passenger Record	Text Manifest	Scanned Manifest	Ship Image
Solla, Marino	Scanno, Italy	1893	26	Passenger Record	Text Manifest	Scanned Manifest	Ship Image
Silla, Nunziato	Scanno	1899	29	Passenger Record	Text Manifest	Scanned Manifest	Ship Image
Silla, Pasquale	Scanno	1901	25	Passenger Record	Text Manifest	Scanned Manifest	Ship Image
Silla, Pasquale	Scanno	1902	29	Passenger Record	Text Manifest	Scanned Manifest	Ship Image
Silla, Pasquale *	Scanno	1902	32	Passenger Record	Text Manifest	Scanned Manifest	Ship Image
...lla, Pasquale nephew DiClemente in Boston	Scanno	1905	32	Passenger Record	Text Manifest	Scanned Manifest	Ship Image
Silla, Pasquale	Scanno, Italy	1914	44	Passenger Record	Text Manifest	Scanned Manifest	Ship Image
Silla, Pasquale	Scanno	1900	37	Passenger Record	Text Manifest	Scanned Manifest	Ship Image
Silvani, Filippo *	Scanno	1900	43	Passenger Record	Text Manifest	Scanned Manifest	Ship Image
Silvani, Michele *	Scanno	1900	43	Passenger Record	Text Manifest	Scanned Manifest	Ship Image
Silvani, Michele	Scanno	1899	24	Passenger Record	Text Manifest	Scanned Manifest	Ship Image
DiStiso, Maria Orazia *							
Siltiso, Maria Orazia							

Da Di Stiso Pietro a Silvani Giuseppe

DiStiso, Pietro *	Scanno	1899	31	Passenger Record	Text Manifest	Scanned Manifest	Ship Image
Siltiso, Pietro	Scanno, Italy	1910	34	Passenger Record	Text Manifest	Scanned Manifest	Ship Image
Silvani, Cesidio	SCANNO	1905	29	Passenger Record	Text Manifest	Scanned Manifest	Ship Image
Silvani, Domenico	Scanno	1906	4	Passenger Record	Text Manifest	Scanned Manifest	Ship Image
Silvani, Lucio	Scanno, Aquila	1908	30	Passenger Record	Text Manifest	Scanned Manifest	Ship Image
Silvani, Michele	Scanno	1903	45	Passenger Record	Text Manifest	Scanned Manifest	Ship Image
Silvani, Nunzio	Scanno, Italy	1922	34	Passenger Record	Text Manifest	Scanned Manifest	Ship Image
Silvani, Nunzio Pio	Scanno, Aquila	1907	19	Passenger Record	Text Manifest	Scanned Manifest	Ship Image
Simboli, Concezio	Scanno, Italy	1914	17	Passenger Record	Text Manifest	Scanned Manifest	Ship Image
Simboli, Davide	Scanno, Italy	1920	33	Passenger Record	Text Manifest	Scanned Manifest	Ship Image
Simboli, Davlde	Scanno	1905	19	Passenger Record	Text Manifest	Scanned Manifest	Ship Image
Simboli, Giulio Dulio	Scanno, Italy	1922	28	Passenger Record	Text Manifest	Scanned Manifest	Ship Image
Simboli, Giuseppe	Scanno, Italy	1910	16	Passenger Record	Text Manifest	Scanned Manifest	Ship Image
Simboli, Lucuenco	Scanno	1893	32	Passenger Record	Text Manifest	Scanned Manifest	Ship Image
Simboli, Maria	Scanno, Italy	1920	19	Passenger Record	Text Manifest	Scanned Manifest	Ship Image
Simboli, Natalina	Scanno, Italy	1920	22	Passenger Record	Text Manifest	Scanned Manifest	Ship Image
Simboli, Pasqualantonio *	Scanno, Italy	1912	23	Passenger Record	Text Manifest	Scanned Manifest	Ship Image
Siniboli, Pasqualantonio	Scanno, Italy	1912	23	Passenger Record	Text Manifest	Scanned Manifest	Ship Image
Simonello, de Rosa	Scanno, Agneld	1907	21	Passenger Record	Text Manifest	Scanned Manifest	Ship Image
Silvani, Giuseppe *	Scanno, Aquila	1912	21	Passenger Record	Text Manifest	Scanned Manifest	Ship Image
Solvani, Giuseppe							

Da Spacone Eustacchio a Simboli Tommaso

Spacone, Eustacchio *	Scanno, Aquila	1913	29	Passenger Record	Text Manifest	Scanned Manifest	Ship Image
Spaceoni, Custachio	Scanno	1899	32	Passenger Record	Text Manifest	Scanned Manifest	Ship Image
Spacone, Giacomo *	Scanno	1905	18	Passenger Record	Text Manifest	Scanned Manifest	Ship Image
Spaconi, Giacomo	Scanno	1902	27	Passenger Record	Text Manifest	Scanned Manifest	Ship Image
Spacone, Giovanni	Scanno, Italy	1911	24	Passenger Record	Text Manifest	Scanned Manifest	Ship Image
Spacone,...	Scanno, Aquila	1912	18	Passenger Record	Text Manifest	Scanned Manifest	Ship Image
Spacone, Bernardo	Scanno, Aquila, It.	1909	25	Passenger Record	Text Manifest	Scanned Manifest	Ship Image
Spacone, Carmolo	Scanno, Aquila, It.	1909	34	Passenger Record	Text Manifest	Scanned Manifest	Ship Image
Spacone, Eustacchio	Scanno	1899	30	Passenger Record	Text Manifest	Scanned Manifest	Ship Image
Spacone, Flavio	Scanno, Aquila	1909	37	Passenger Record	Text Manifest	Scanned Manifest	Ship Image
Spacone, Francesco	Scanno, Italy	1924	33	Passenger Record	Text Manifest	Scanned Manifest	Ship Image
Spacone, Gaetano	Scanno	1903	19	Passenger Record	Text Manifest	Scanned Manifest	Ship Image
Spacone, Mario	Scanno, Italy	1920	29	Passenger Record	Text Manifest	Scanned Manifest	Ship Image
Spacone, Nunzio	Scanno, Italy	1911	24	Passenger Record	Text Manifest	Scanned Manifest	Ship Image
Spacone, Pietro	Scanno	1901	23	Passenger Record	Text Manifest	Scanned Manifest	Ship Image
Spacone, Salvatore	Scanno, Italy	1920	22	Passenger Record	Text Manifest	Scanned Manifest	Ship Image
Spacone, Teupista	Scanno	1905	33	Passenger Record	Text Manifest	Scanned Manifest	Ship Image
Spacone (?), Silverio *	Scanno	1905	33	Passenger Record	Text Manifest	Scanned Manifest	Ship Image
Spallone, Silverio	Scanno	1905	33	Passenger Record	Text Manifest	Scanned Manifest	Ship Image
Simboli (?), Tommaso *	Scanno	1906	23	Passenger Record	Text Manifest	Scanned Manifest	Ship Image
Struboli, Tommaso	Scanno	1906	23	Passenger Record	Text Manifest	Scanned Manifest	Ship Image

Da Tannessa (?) Domenico a Tarullo Desiderio (1904)

Tannessa, Domenico	Scanno, Italy	1914	15	Passenger Record	Text Manifest	Scanned Manifest	Ship Image
Tannesso, Domenico	Scanno, Italy	1914	16	Passenger Record	Text Manifest	Scanned Manifest	Ship Image
Tanturri, Ivino * <small>Nannarone, P</small>	Scanno	1902	14	Passenger Record	Text Manifest	Scanned Manifest	Ship Image
Tanturri, Francesco	Scanno, Aquila	1912	24	Passenger Record	Text Manifest	Scanned Manifest	Ship Image
Tanturri, Nicola	Scanno	1901	18	Passenger Record	Text Manifest	Scanned Manifest	Ship Image
Tarullo, Aretta Angela	Scanno, Italy	1914	11	Passenger Record	Text Manifest	Scanned Manifest	Ship Image
Tarullo, Coriolano	Scanno	1898	31	Passenger Record	Text Manifest	Scanned Manifest	Ship Image
Tarullo, Domenico	Scanno	1906	21	Passenger Record	Text Manifest	Scanned Manifest	Ship Image
Tarullo, Erliele	Scanno	1902	45	Passenger Record	Text Manifest	Scanned Manifest	Ship Image
Tarullo, Giuseppe	Scanno, Aquila	1912	25	Passenger Record	Text Manifest	Scanned Manifest	Ship Image
Tarullo, Giuseppe	Scanno, Aquila	1910	23	Passenger Record	Text Manifest	Scanned Manifest	Ship Image
Tarullo, Giuseppe	Scanno	1905	19	Passenger Record	Text Manifest	Scanned Manifest	Ship Image
Tarullo, Italo	Scanno, Aquila	1914	9	Passenger Record	Text Manifest	Scanned Manifest	Ship Image
Tarullo, Ma. Addolorata	Scanno, Aquila	1914	35	Passenger Record	Text Manifest	Scanned Manifest	Ship Image
Tarullo, Osvaldo	Scanno, Italy	1914	3	Passenger Record	Text Manifest	Scanned Manifest	Ship Image
Tarullo, Severina	Scanno, Italy	1910	4	Passenger Record	Text Manifest	Scanned Manifest	Ship Image
Tarullo, Sole	Scanno, Italy	1914	1	Passenger Record	Text Manifest	Scanned Manifest	Ship Image
Tarsillo, Ma. Rita	Scanno, Aquilata	1907	41	Passenger Record	Text Manifest	Scanned Manifest	Ship Image
Tarullo, Anacleto	Scanno, Italy	1920	48	Passenger Record	Text Manifest	Scanned Manifest	Ship Image
Tarullo, Angelo	Scanno	1905	18	Passenger Record	Text Manifest	Scanned Manifest	Ship Image
Tarullo, Anna	Scanno	1910	21	Passenger Record	Text Manifest	Scanned Manifest	Ship Image
Tarullo, Antonio *	Scanno, Aquila	1908	10	Passenger Record	Text Manifest	Scanned Manifest	Ship Image
San Carullo, Antonio	Scanno, Italy	1913	30	Passenger Record	Text Manifest	Scanned Manifest	Ship Image
Tarullo, Antonio	Scanno	1904	23	Passenger Record	Text Manifest	Scanned Manifest	Ship Image

Da Tarullo Desiderio (1898) a Nocente Rocco

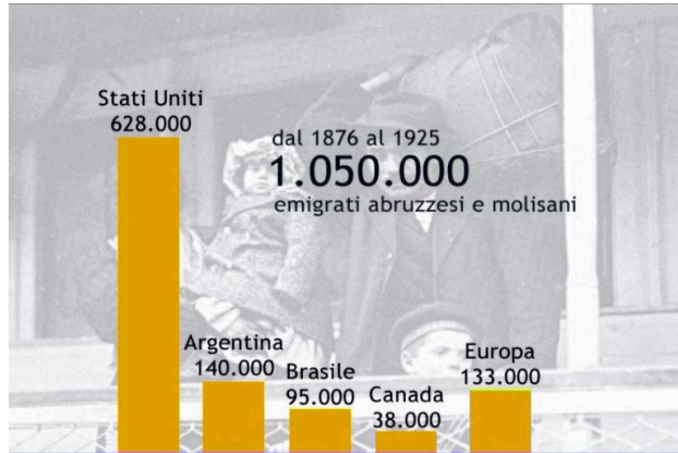
Tarullo, Desiderio	Scanno	1898	17	Passenger Record	Text Manifest	Scanned Manifest	Ship Image
Tarullo, Filiberto *	Scanno, Italy	1913	32	Passenger Record	Text Manifest	Scanned Manifest	Ship Image
Tarullo, Flaminio	Scanno, Aquila	1920	19	Passenger Record	Text Manifest	Scanned Manifest	Ship Image
Tarullo, Ilario Flavio	Scanno, Aquila	1913	16	Passenger Record	Text Manifest	Scanned Manifest	Ship Image
Tarullo, Nunzio	Scanno, Aquila	1913	27	Passenger Record	Text Manifest	Scanned Manifest	Ship Image
Tarullo, Nunzio	Scanno, Italy	1922	35	Passenger Record	Text Manifest	Scanned Manifest	Ship Image
Tarullo, Pasquale	Scanno, Italy	1923	33	Passenger Record	Text Manifest	Scanned Manifest	Ship Image
Tarullo, Pasquale Ant.	Scanno, Italy	1920	30	Passenger Record	Text Manifest	Scanned Manifest	Ship Image
Tarullo, Pasquale	Scanno, Aquila	1913	23	Passenger Record	Text Manifest	Scanned Manifest	Ship Image
Tarullo, Pasquale *	Scanno	1910	26	Passenger Record	Text Manifest	Scanned Manifest	Ship Image
Tarullo, Pasquale	Scanno, Aquila	1910	36	Passenger Record	Text Manifest	Scanned Manifest	Ship Image
Tarullo, Pasquale	Scanno	1903	13	Passenger Record	Text Manifest	Scanned Manifest	Ship Image
Tarullo, Silvio	Scanno	1906	21	Passenger Record	Text Manifest	Scanned Manifest	Ship Image
Tarullo, Vinanzio	Scanno, Aquila	1902	45	Passenger Record	Text Manifest	Scanned Manifest	Ship Image
Tarullo, Ilario	Scanno	1903	51	Passenger Record	Text Manifest	Scanned Manifest	Ship Image
Turno, Carmelo	Scanno	1903	17	Passenger Record	Text Manifest	Scanned Manifest	Ship Image
Ubaldi, Carmelo	Scanno, Italy	1922	24	Passenger Record	Text Manifest	Scanned Manifest	Ship Image
Ubaldi, Domenico	Scanno	1900	44	Passenger Record	Text Manifest	Scanned Manifest	Ship Image
Ubaldi, Giuseppe	Scanno	1905	46	Passenger Record	Text Manifest	Scanned Manifest	Ship Image
Ubaldi, Isidoro	Scanno	1902	24	Passenger Record	Text Manifest	Scanned Manifest	Ship Image
Ubaldi, Isidoro	Scanno	1893	15	Passenger Record	Text Manifest	Scanned Manifest	Ship Image
Vicario, Panfilo	Scanno, Italy	1907	37	Passenger Record	Text Manifest	Scanned Manifest	Ship Image
Nocente (Vocento), Rosario fu Orazio *	Scanno	1900	36	Passenger Record	Text Manifest	Scanned Manifest	Ship Image
Nocente (Vocente) Rocco *	Scanno	1899	28	Passenger Record	Text Manifest	Scanned Manifest	Ship Image

Alcuni dati

Al fine di avere sotto mano un quadro generale dell'emigrazione dalla Valle Peligna negli U.S.A. riportiamo ora alcuni dati statistici raccolti dall'*Associazione Culturale Pietro De Stephanis* di Pettorano sul Gizio (L'Aquila) e pubblicati l'11 agosto 2007 da Marcello Bonitatibus.

TAB. A - I numeri del grande esodo:

L'Abruzzo nel mondo.
I numeri del "Grande esodo"

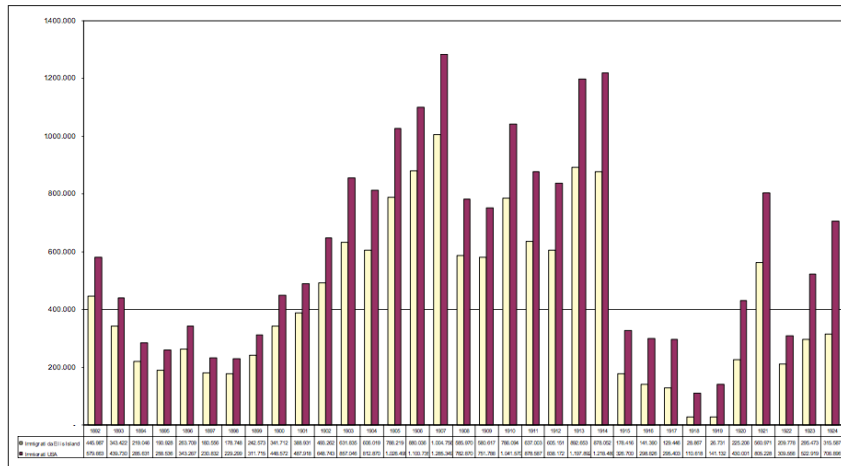


Pettorano sul Gizio 11-8-2007

Marcello Bonitatibus

TAB. B - Gli immigrati negli U.S.A. dal 1892 al 1924:

Immigrati negli Stati Uniti attraverso Ellis Island e in totale.
Anni 1892-1924



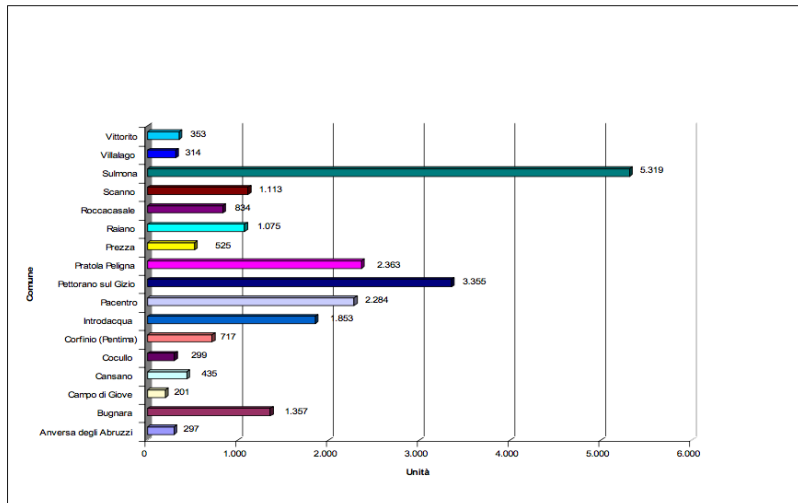
Fonte: Elaborazione M. Bonitatibus su dati Pamela Reeves, Ellis Island. Gateway to the american dreams. Friedman Group, New York, 1991.

Pettorano sul Gizio 11-8-2007

Marcello Bonitatibus

TAB. C - I comuni di provenienza:

La Valle Peligna ad Ellis Island. Emigrati per comune di provenienza. 1892-1924



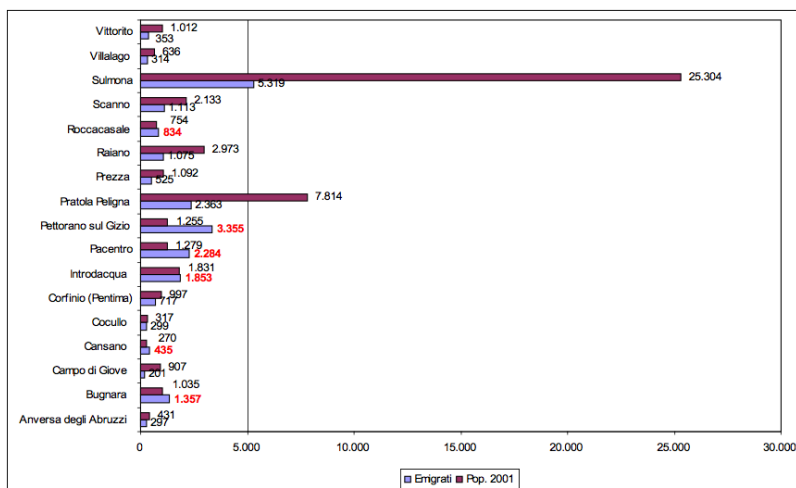
Fonte: Elaborazione M. Bonitatibus su dati Fondazione Ellis Island

Pettorano sul Gizio 11-8-2007

Marcello Bonitatibus

TAB. D - Confronto tra emigrati e popolazione residente al 2001:

La Valle Peligna ad Ellis Island. Confronto fra emigrati negli USA attraverso Ellis Island e popolazione residente al Censimento 2001



Fonte: Elaborazione M. Bonitatibus su dati Fondazione Ellis Island

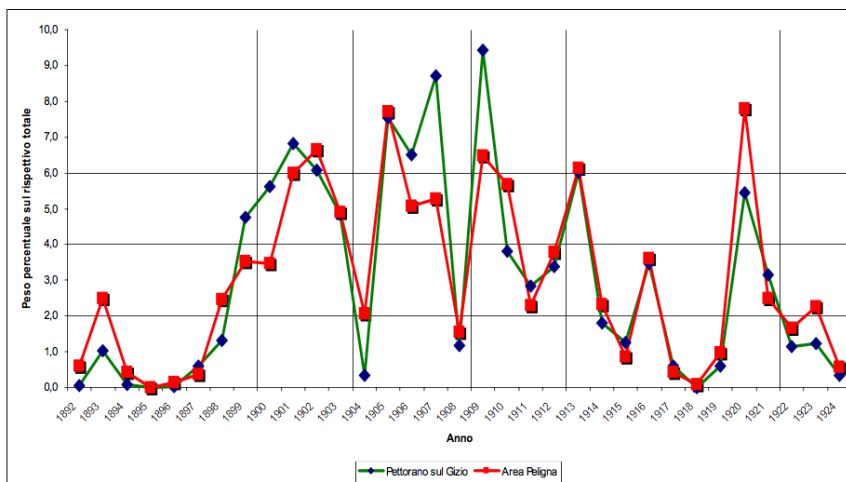
Pettorano sul Gizio 11-8-2007

Marcello Bonitatibus

TAB. E - Ingressi ad Ellis Island dal 1892 al 1924:



Gli ingressi ad Ellis Island da Pettorano e dalla Valle Peligna per anno. 1892-1924



Fonte: Elaborazione M. Bonitatibus su dati Fondazione Ellis Island

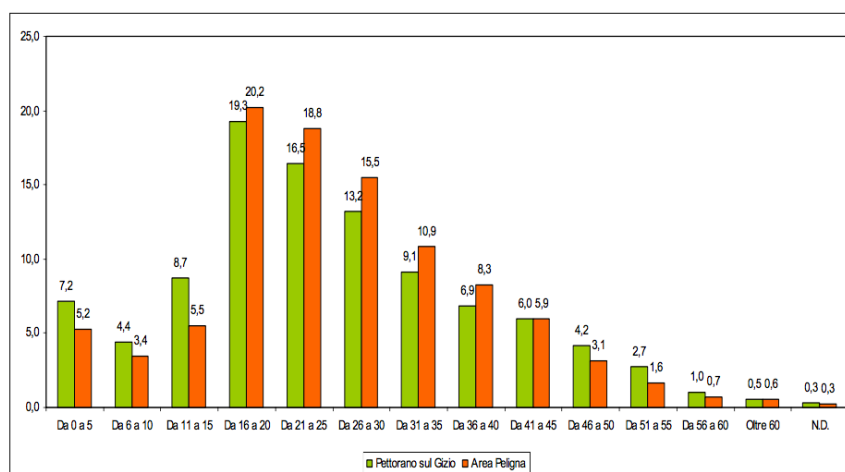
Pettorano sul Gizio 11-8-2007

Marcello Bonitatibus

TAB. F - Ingressi per fasce di età:



Gli ingressi ad Ellis Island da Pettorano e dalla Valle Peligna per fasce di età. 1892-1924



Fonte: Elaborazione M. Bonitatibus su dati Fondazione Ellis Island

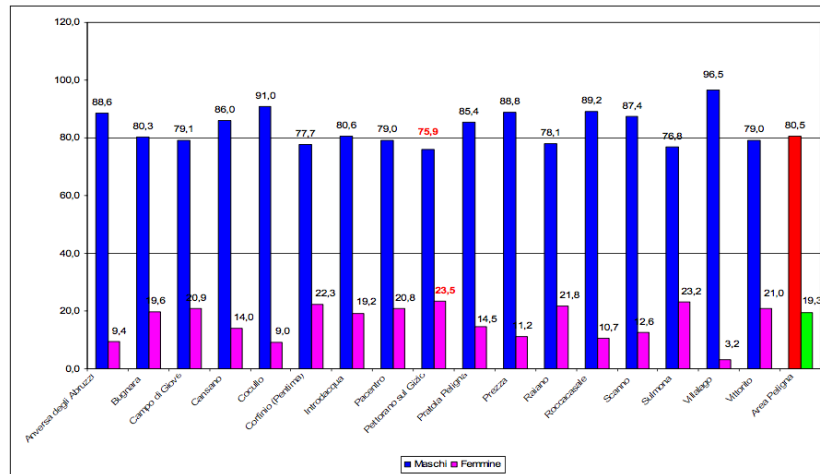
Pettorano sul Gizio 11-8-2007

Marcello Bonitatibus

TAB. G - Ingressi per sesso:



Gli ingressi ad Ellis Island da Pettorano e dalla Valle Peligna per sesso. 1892-1924



Fonte: Elaborazione M. Bonitatibus su dati Fondazione Ellis Island

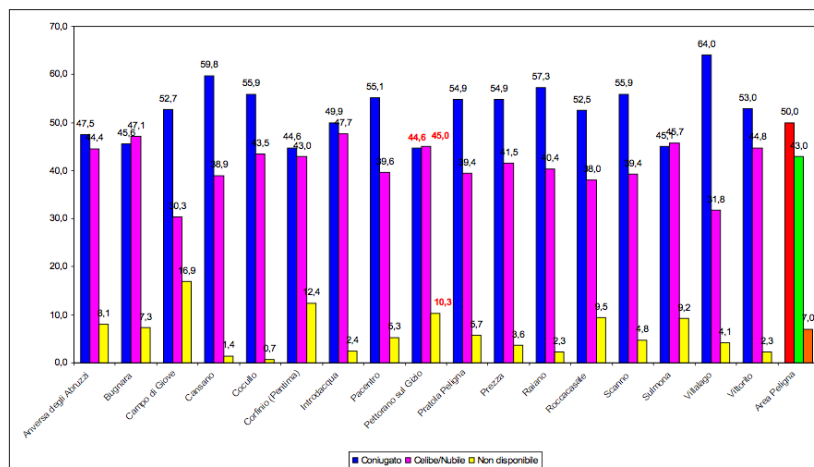
Pettorano sul Gizio 11-8-2007

Marcello Bonitatibus

TAB. H - Ingressi per stato civile:



Gli ingressi ad Ellis Island da Pettorano e dalla Valle Peligna per stato civile. 1892-1924



Fonte: Elaborazione M. Bonitatibus su dati Fondazione Ellis Island

Pettorano sul Gizio 11-8-2007

Marcello Bonitatibus

Conclusioni

Rimandiamo ogni considerazione ai prossimi lavori.

E invitiamo, sin da ora, i lettori - di Scanno, Frattura e Villalago - che intendano completare con noi il quadro delle vicende che stiamo raccontando a inviare riflessioni, ricordi, lettere, memoriali, foto, filmati, ecc. ai seguenti indirizzi:

- codacchiola@gmail.com
- Largo Strindberg, 15 - 00142 Roma